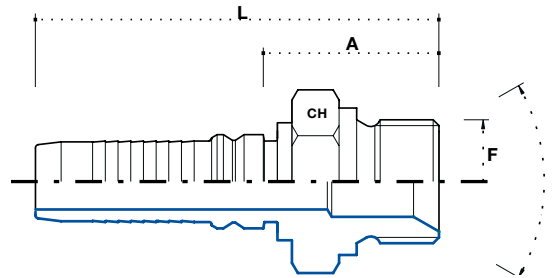


**AGR 60° Innenkonus
(BSP-Gewinde) Interlock**

BSP male parallel 60° Interlock

AGR угловой ниппель 60°,
interlock, внутренний конус,
BSP резьба

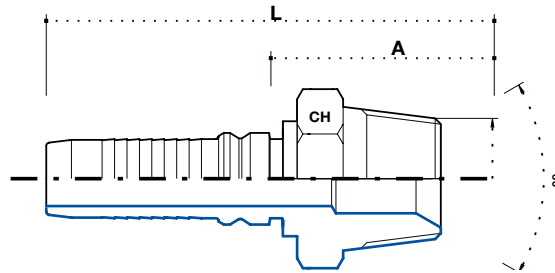


Artikel Code	Schlauch / Hose			Gewinde / Thread		Abmessung / Dimension mm				Euro
	DN	Inch Inches	Size			F	-	CH	A	
KMG1212	20	3/4"	12	3/4" - 14	-	-	32	34.7	96.5	9,92
KMG1616	25	1"	16	1" - 11	-	-	38	37.4	109	11,89
KMG1620	25	1"	16	1.1/4" - 11	-	-	50	42.6	114.7	27,30
KMG2020	32	1.1/4"	20	1.1/4" - 11	-	-	50	44.2	132.5	16,13
KMG2424	40	1.1/2"	24	1.1/2" - 11	-	-	55	44.5	138	17,21
KMG3232	50	2"	32	2" - 11	-	-	70	54	152	31,75

AGR konisch (BSP) Interlock

BSP taper male Interlock

**AGR ниппель, interlock,
конический, BSP резьба**



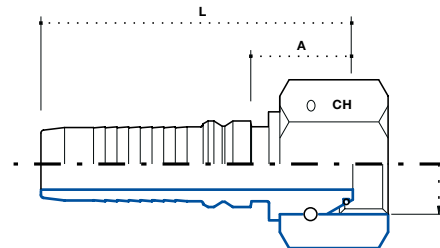
5

Artikel Code	Schlauch / Hose			Gewinde / Thread		Abmessung / Dimension mm				Euro
	DN	Inch Inches	Size			F	-	CH	A	
KMGK1212	20	3/4"	12	3/4" - 14	-	-	27	34.7	96.5	8,89
KMGK1616	25	1"	16	1" - 11	-	-	36	43.5	115.5	11,32
KMGK2020	32	1.1/4"	20	1.1/4" - 11	-	-	46	44.2	132.5	15,19
KMGK2424	40	1.1/2"	24	1.1/2" - 11	-	-	50	46	139.5	20,78
KMGK3232	50	2"	32	2" - 11	-	-	65	57	155	33,46

DKR mit O-ring + gestiftete Überwurfmutter (BSP-Gewinde) Interlock

BSP female thrust wired nut Interlock

DKR BSP ниппель, interlock с уплотнительным резиновым кольцом, гайка со штифтом

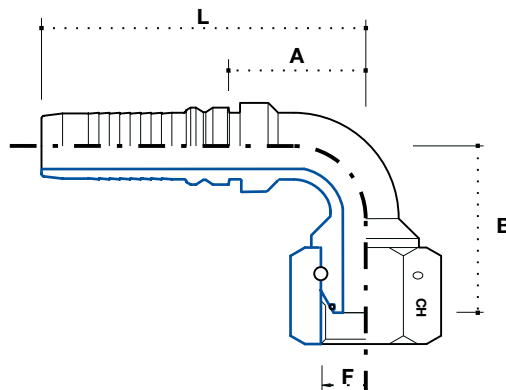


Artikel Code	Schlauch / Hose			Gewinde / Thread		Abmessung / Dimension mm				Euro
	DN	Inch Inches	Size			F	-	CH	A	
KFDG1212	20	3/4"	12	3/4" - 14	-	-	32	22.7	84.5	5,24
KFDG1616	25	1"	16	1" - 11	-	-	38	24.7	96.5	9,18
KFDG1620	25	1"	16	1.1/4" - 11	-	-	50	27.5	99.5	14,36
KFDG2020	32	1.1/4"	20	1.1/4" - 11	-	-	50	28.2	116.5	14,76
KFDG2424	40	1.1/2"	24	1.1/2" - 11	-	-	55	30.5	124	23,94
KFDG3232	50	2"	32	2" - 11	-	-	70	34	132	31,58

DKR 90° Bogen mit O-ring + gestiftete Überwurfmutter (BSP-Gewinde) Interlock

90° BSP female thrust wired nut Interlock

DKR угловой ниппель 90°, interlock с уплотнительным резиновым кольцом, гайка со штифтом



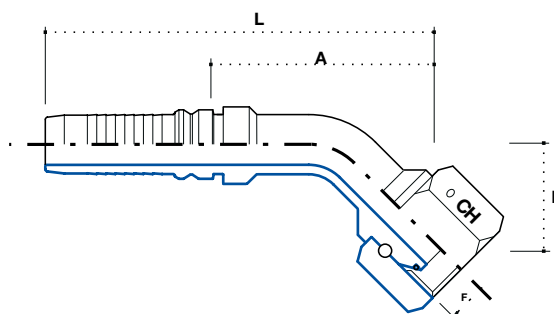
5

Artikel Code	Schlauch / Hose			Gewinde / Thread F		Abmessung / Dimension mm				Euro
	DN	Inch Inches	Size			CH	B	A	L	
KF90G1212	20	3/4"	12	3/4" - 14	-	32	59	54	113	10,09
KF90G1616	25	1"	16	1" - 11	-	38	72	70.5	142.5	15,62
KF90G1620	25	1"	16	1.1/4" - 11	-	50	80	70.5	142.5	41,35
KF90G2020	32	1.1/4"	20	1.1/4" - 11	-	50	93	87.7	176	24,80
KF90G2424	40	1.1/2"	24	1.1/2" - 11	-	55	114	99.5	193	36,02
KF90G3232	50	2"	32	2" - 11	-	70	136	135	233	58,06

DKR 45° Bogen mit O-ring + gestiftete Überwurfmutter (BSP-Gewinde) Interlock

45° BSP female thrust wired nut Interlock

DKR угловой ниппель 45°, interlock с уплотнительным резиновым кольцом, гайка со штифтом

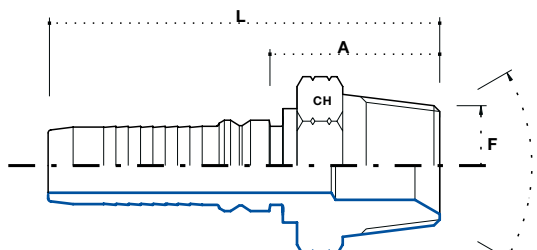


Artikel Code	Schlauch / Hose			Gewinde / Thread		Abmessung / Dimension mm				Euro
	DN	Inch Inches	Size			F	CH	B	A	
KF45G1212	20	3/4"	12	3/4" - 14	-	32	29	60.7	122.5	10,52
KF45G1616	25	1"	16	1" - 11	-	38	41	87.5	159.5	16,30
KF45G1620	25	1"	16	1.1/4" - 11	-	50	44	90.5	162.5	41,35
KF45G2020	32	1.1/4"	20	1.1/4" - 11	-	50	44	100.5	189	24,34
KF45G2424	40	1.1/2"	24	1.1/2" - 11	-	55	45	116.5	210	34,12
KF45G3232	50	2"	32	2" - 11	-	70	68	156	254	55,75

**AGN 60° Innenkonus (NPTF)
Interlock**

NPTF male 60° Interlock

AGN ниппель, внутренний
конус 60° interlock, NPTF
резьба



Artikel Code	Schlauch / Hose			Gewinde / Thread	F	Abmessung / Dimension mm				Euro
	DN	Inch Inches	Size			-	CH	A	L	
KMNPTF1212	20	3/4"	12	3/4" - 14	-	-	27	34.5	96.5	7,35
KMNPTF1216	20	3/4"	12	1" - 11.5	-	-	36	42.5	104.5	18,38
KMNPTF1616	25	1"	16	1" - 11.5	-	-	36	43	115	9,69
KMNPTF1620	25	1"	16	1.1/4" - 11.5	-	-	46	43	115	19,81
KMNPTF2020	32	1.1/4"	20	1.1/4" - 11.5	-	-	46	44	137.5	12,83
KMNPTF2024	32	1.1/4"	20	1.1/2" - 11.5	-	-	50	44	137.5	24,74
KMNPTF2424	40	1.1/2"	24	1.1/2" - 11.5	-	-	50	45.5	139	15,25
KMNPTF3232	50	2"	32	2" - 11.5	-	-	65	57	155	24,80