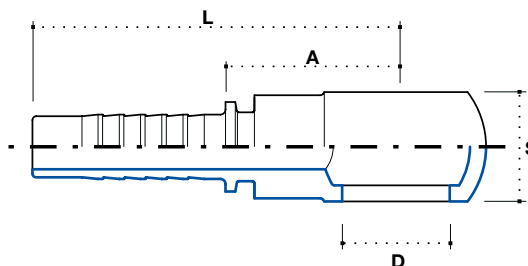


**Ringnippel für Hohlschraube
BSP / RNR**

BSP banjo

Кольцевидный ниппель
BANJO, BSP / RNR

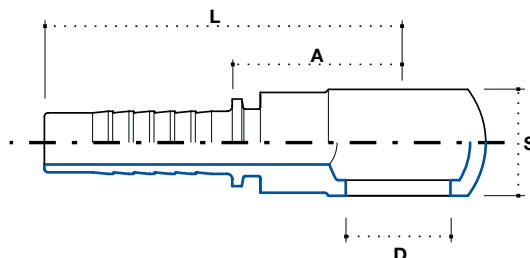


Artikel Code	Schlauch / Hose			Gewinde / Thread F		Abmessung / Dimension mm				Euro
	DN	Inch Inches	Size			D	S	A	L	
OG0302	5	3/16"	03	1/8" - 28	-	10	10	19.5	45	1,80
OG0304	5	3/16"	03	1/4" - 19	-	13.2	14	22.5	47.5	1,80
OG0402	6	1/4"	04	1/8" - 28	-	10	10	24	52	1,65
OG0404	6	1/4"	04	1/4" - 19	-	13.2	14	23	51	1,57
OG0406	6	1/4"	04	3/8" - 19	-	16.7	17	26.5	54.5	2,28
OG0408	6	1/4"	04	1/2" - 14	-	21	22	32.5	60.5	5,64
OG0504	8	5/16"	05	1/4" - 19	-	13.2	14	24	52	2,28
OG0506	8	5/16"	05	3/8" - 19	-	16.7	17	26.5	54.5	2,34
OG0508	8	5/16"	05	1/2" - 14	-	21	22	27.5	61	3,76
OG0604	10	3/8"	06	1/4" - 19	-	13.2	14	31.5	61.5	2,28
OG0606	10	3/8"	06	3/8" - 19	-	16.7	17	26.5	56.5	1,88
OG0608	10	3/8"	06	1/2" - 14	-	21	22	27.5	57.5	2,82
OG0806	12	1/2"	08	3/8" - 19	-	16.7	17	31	64	3,05
OG0808	12	1/2"	08	1/2" - 14	-	21	22	33	66	2,82
OG0810	12	1/2"	08	5/8" - 14	-	23.3	25	32.5	65.5	9,01
OG0812	12	1/2"	08	3/4" - 14	-	26.5	30	34.5	67.5	9,78
OG1010	16	5/8"	10	5/8" - 14	-	23.3	25	32.5	68.5	8,61
OG1012	16	5/8"	10	3/4" - 14	-	26.5	30	34.5	70.5	9,86
OG1212	20	3/4"	12	3/4" - 14	-	26.5	30	35	76	8,21
OG1216	20	3/4"	12	1" - 11	-	33.4	38	48	89	19,81
OG1616	25	1"	16	1" - 11	-	33.4	38	43	98	17,98
OG2020	32	1.1/4"	20	1.1/4" - 11	-	-	-	-	-	*

**Ringnippel für Hohlschraube
metrisch / RNM**

Metric banjo

**Кольцевидный ниппель
BANJO, метрический / RNM**

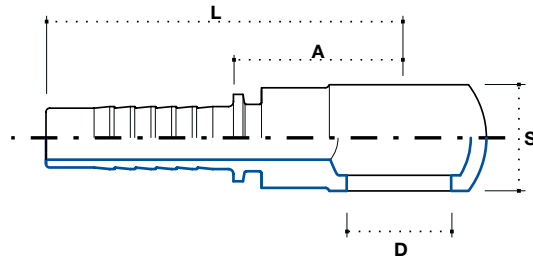


Artikel Code	Schlauch / Hose			Gewinde / Thread F		Abmessung / Dimension mm				Euro
	DN	Inch Inches	Size			D	S	A	L	
OM0310	5	3/16"	03	M10 x 1	-	10.1	10	20	45	1,97
OM0312	5	3/16"	03	M12 x 1.5	-	12.1	12	21	46	1,97
OM0314	5	3/16"	03	M14 x 1.5	-	14.1	14	23	48	2,02
OM0410	6	1/4"	04	M10 x 1	-	10.1	10	24	52	1,80
OM0412	6	1/4"	04	M12 x 1.5	-	12.1	11	23	51	1,65
OM0414	6	1/4"	04	M14 x 1.5	-	14.1	14	23	51	1,88
OM0416	6	1/4"	04	M16 x 1.5	-	16.1	17	25	53	2,34
OM0418	6	1/4"	04	M18 x 1.5	-	18.1	20	29	57	3,53
OM0512	8	5/16"	05	M12 x 1.5	-	12.1	12	23	52	2,74
OM0514	8	5/16"	05	M14 x 1.5	-	14.1	14	24.5	52.5	2,51
OM0516	8	5/16"	05	M16 x 1.5	-	16.1	17	27	55	2,34
OM0518	8	5/16"	05	M18 x 1.5	-	18.1	20	29	57	2,91
OM0520	8	5/16"	05	M20 x 1.5	-	20.1	22	28	56	4,70
OM0522	8	5/16"	05	M22 x 1.5	-	22.1	22	28	56	4,70
OM0614	10	3/8"	06	M14 x 1.5	-	14.1	14	27	57	2,51
OM0616	10	3/8"	06	M16 x 1.5	-	16.1	17	27	57	2,20
OM0618	10	3/8"	06	M18 x 1.5	-	18.1	20	28	58	2,74
OM0620	10	3/8"	06	M20 x 1.5	-	20.1	22	28.5	58.5	4,48
OM0622	10	3/8"	06	M22 x 1.5	-	22.1	22	28.5	58.5	3,99
OM0818	12	1/2"	08	M18 x 1.5	-	18.1	20	30	63	3,14
OM0820	12	1/2"	08	M20 x 1.5	-	20.1	22	34	67	4,08
OM0822	12	1/2"	08	M22 x 1.5	-	22.1	22	34	67	3,68
OM0826	12	1/2"	08	M26 x 1.5	-	-	-	-	-	9,78

**Ringnippel für Hohl-
schraube
metrisch / RNM**

Metric banjo

**Кольцевидный ниппель
BANJO, метрический / RNM**



Artikel Code	Schlauch / Hose			Gewinde / Thread F		Abmessung / Dimension mm				Euro
	DN	Inch Inches	Size			D	S	A	L	
OM1022	16	5/8"	10	M22 x 1.5	-	22.1	22	34	70	7,44
OM1026	16	5/8"	10	M26 x 1.5	-	-	-	-	-	9,86
OM1226	20	3/4"	12	M26 x 1.5	-	-	-	-	-	8,21
OM1230	20	3/4"	12	M30 x 1.5	-	30.1	36	41.5	82.5	22,69
OM1630	25	1"	16	M30 x 1.5	-	30.1	36	41.5	96.5	20,75