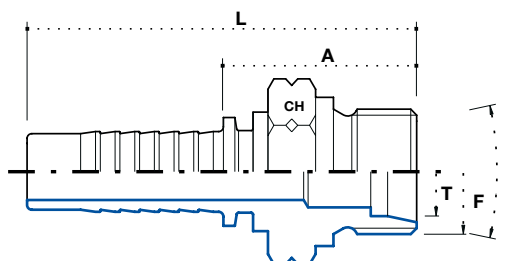


CEL 24° Konus metrisch

Metric male 24° cone I.t.

CEL ниппель, 24° метрический, легкий ряд



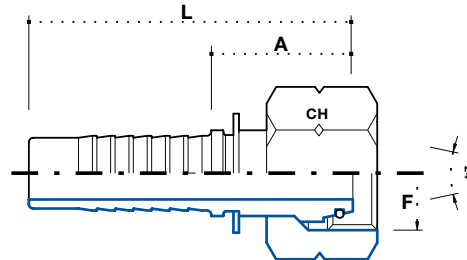
3

Artikel Code	Schlauch / Hose			Gewinde / Thread F	Tubo mm	Abmessung / Dimension mm				Euro
	DN	Inch Inches	Size			-	CH	A	L	
ME0312L6	5	3/16"	03	M12 x 1.5	6	-	15	22.5	50	1,04
ME0314L8	5	3/16"	03	M14 x 1.5	8	-	15	23	51	1,77
ME0412L6	6	1/4"	04	M12 x 1.5	6	-	15	23	51	1,04
ME0414L8	6	1/4"	04	M14 x 1.5	8	-	15	23	51	0,85
ME0416L10	6	1/4"	04	M16 x 1.5	10	-	17	25	53	1,09
ME0418L12	6	1/4"	04	M18 x 1.5	12	-	19	26	54	1,48
ME0516L10	8	5/16"	05	M16 x 1.5	10	-	17	25	53	0,86
ME0518L12	8	5/16"	05	M18 x 1.5	12	-	19	26	54	1,25
ME0616L10	10	3/8"	06	M16 x 1.5	10	-	17	25	55	1,06
ME0618L12	10	3/8"	06	M18 x 1.5	12	-	19	25	55.5	0,81
ME0622L15	10	3/8"	06	M22 x 1.5	15	-	24	27	57	1,35
ME0822L15	12	1/2"	08	M22 x 1.5	15	-	24	27.5	60.5	1,12
ME0826L18	12	1/2"	08	M26 x 1.5	18	-	27	27.5	60.5	2,15
ME1026L18	16	5/8"	10	M26 x 1.5	18	-	27	27.5	63.5	1,80
ME1030L22	16	5/8"	10	M30 x 2	22	-	32	31.5	67	3,46
ME1226L18	20	3/4"	12	M26 x 1.5	18	-	27	29	68.5	3,76
ME1230L22	20	3/4"	12	M30 x 2	22	-	32	32	73	2,36
ME1636L28	25	1"	16	M36 x 2	28	-	38	40	92.5	4,52
ME2045L35	32	1.1/4"	20	M45 x 2	35	-	46	41.5	101.5	7,19
ME2452L42	40	1.1/2"	24	M52 x 2	42	-	55	40	107	11,56

**DKO-L Innengewinde mit
O-ring 24° Konus**

O-ring metric female 24°
cone I.t.

DKO-L ниппель, конус 24° с
уплотнительным резиновым
кольцом, метрический, легкий
ряд.



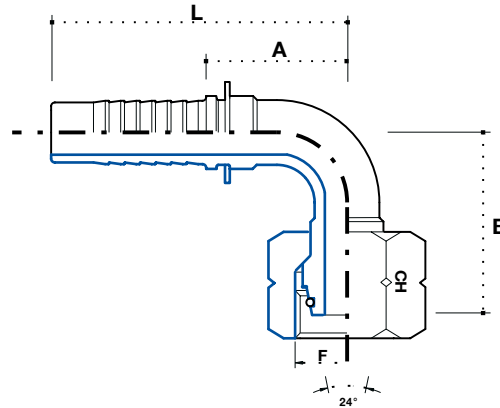
Artikel Code	Schlauch / Hose			Gewinde / Thread F	Tubo mm	Abmessung / Dimension mm				Euro
	DN	Inch Inches	Size			-	CH	A	L	
FE0312L6	5	3/16"	03	M12 x 1.5	6	-	14	25.5	50	1,57
FE0314L8	5	3/16"	03	M14 x 1.5	8	-	17	25.5	50	1,97
*FE0412L6	6	1/4"	04	M12 x 1.5	6	-	14	21	48.5	1,03
FE0414L8	6	1/4"	04	M14 x 1.5	8	-	17	23.5	53	0,81
FE0416L10	6	1/4"	04	M16 x 1.5	10	-	19	26	54	0,89
FE0418L12	6	1/4"	04	M18 x 1.5	12	-	22	26	54	1,09
FE0516L10	8	5/16"	05	M16 x 1.5	10	-	19	26	54	0,76
FE0518L12	8	5/16"	05	M18 x 1.5	12	-	22	26	54	0,95
*FE0616L10	10	3/8"	06	M16 x 1.5	10	-	19	23.5	53.5	1,97
FE0618L12	10	3/8"	06	M18 x 1.5	12	-	22	26.5	56.5	0,83
FE0622L15	10	3/8"	06	M22 x 1.5	15	-	27	27	57	1,51
FE0822L15	12	1/2"	08	M22 x 1.5	15	-	27	27.5	60.5	1,20
FE0826L18	12	1/2"	08	M26 x 1.5	18	-	32	28	61	1,77
FE1026L18	16	5/8"	10	M26 x 1.5	18	-	32	30	64	1,71
FE1030L22	16	5/8"	10	M30 x 2	22	-	36	31	66.5	3,39
FE1226L18	20	3/4"	12	M26 x 1.5	18	-	-	-	-	4,36
FE1230L22	20	3/4"	12	M30 x 2	22	-	36	31	72	2,52
FE1636L28	25	1"	16	M36 x 2	28	-	41	33.5	88.5	3,98
FE2045L35	32	1.1/4"	20	M45 x 2	35	-	50	38.5	99	6,88
FE2452L42	40	1.1/2"	24	M52 x 2	42	-	60	39	109.5	12,27

* Gekrimpte Mutter / Crimping nut

DKO-L 90° Bogen Innengewinde mit O-ring 24° Konus

90° O-ring metric swept elbow
24° cone l.t.

DKO-L угловой ниппель 90°,
конус 24° с уплотнительным
резиновым кольцом,
метрический, легкий ряд



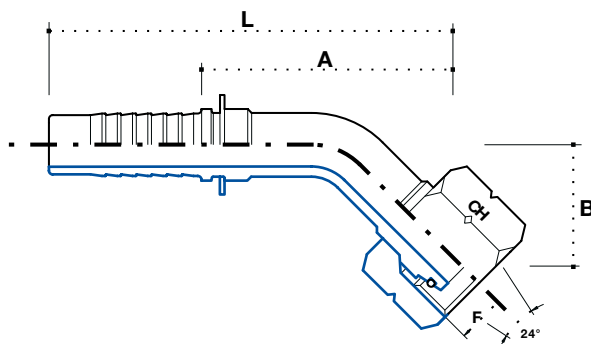
Artikel Code	Schlauch / Hose			Gewinde / Thread	Tubo mm	Abmessung / Dimension mm				Euro
	DN	Inch Inches	Size	F		CH	B	A	L	
F90E0312L6	5	3/16"	03	M12 x 1.5	6	14	31.5	29.5	53.5	2,82
F90E0314L8	5	3/16"	03	M14 x 1.5	8	17	31.5	29.5	53.5	3,53
*F90E0412L6	6	1/4"	04	M12 x 1.5	6	14	31.5	29.5	57	2,05
F90E0414L8	6	1/4"	04	M14 x 1.5	8	17	31.5	29.5	57	1,57
F90E0416L10	6	1/4"	04	M16 x 1.5	10	19	32.5	29	56.5	1,63
F90E0418L12	6	1/4"	04	M18 x 1.5	12	22	30.5	27	55	2,68
F90E0516L10	8	5/16"	05	M16 x 1.5	10	19	32.5	31	59	1,68
F90E0518L12	8	5/16"	05	M18 x 1.5	12	22	37	29	57	1,88
*F90E0616L10	10	3/8"	06	M16 x 1.5	10	19	38	33	63	3,28
F90E0618L12	10	3/8"	06	M18 x 1.5	12	22	37.5	35.5	65	1,72
F90E0622L15	10	3/8"	06	M22 x 1.5	15	27	42	34	64	3,14
F90E0822L15	12	1/2"	08	M22 x 1.5	15	27	44	39.5	72	2,48
F90E0826L18	12	1/2"	08	M26 x 1.5	18	32	46.5	39.5	72	4,56
F90E1026L18	16	5/8"	10	M26 x 1.5	18	32	50.5	48.5	84	3,56
F90E1030L22	16	5/8"	10	M30 x 2	22	36	53	48.5	84	7,84
F90E1226L18	20	3/4"	12	M26 x 1.5	18	-	-	-	-	16,26
F90E1230L22	20	3/4"	12	M30 x 2	22	36	55.5	56.5	97	4,99
F90E1636L28	25	1"	16	M36 x 2	28	41	72.5	73	127	9,41
F90E2045L35	32	1.1/4"	20	M45 x 2	35	50	86.5	92	152	15,61
F90E2452L42	40	1.1/2"	24	M52 x 2	42	60	94	99	170	30,12

* Gekrimpte Mutter / Crimping nut

DKO-L 45° Bogen Innengewinde mit O-ring 24° Konus

45° O-ring metric swept elbow
24° cone l.t.

DKO-L угловой ниппель 45°,
конус 24° с уплотнительным
резиновым кольцом,
метрический, легкий ряд



Artikel Code	Schlauch / Hose			Gewinde / Thread F	Tubo mm	Abmessung / Dimension mm				Euro
	DN	Inch Inches	Size			CH	B	A	L	
F45E0312L6	5	3/16"	03	M12 x 1.5	6	14	15	37	65	3,11
F45E0314L8	5	3/16"	03	M14 x 1.5	8	17	15	37	65	3,88
*F45E0412L6	6	1/4"	04	M12 x 1.5	6	14	17	40	68	4,65
F45E0414L8	6	1/4"	04	M14 x 1.5	8	17	17	50	78	1,71
F45E0416L10	6	1/4"	04	M16 x 1.5	10	19	17	48.5	76	1,80
F45E0418L12	6	1/4"	04	M18 x 1.5	12	22	17	48.5	76	2,94
F45E0516L10	8	5/16"	05	M16 x 1.5	10	19	17	52.5	80	1,68
F45E0518L12	8	5/16"	05	M18 x 1.5	12	22	20	50	78	1,93
*F45E0616L10	10	3/8"	06	M16 x 1.5	10	19	20	55	85	3,62
F45E0618L12	10	3/8"	06	M18 x 1.5	12	22	17	57	86.5	1,77
F45E0622L15	10	3/8"	06	M22 x 1.5	15	27	19	59	88.5	3,45
F45E0822L15	12	1/2"	08	M22 x 1.5	15	27	22	64	97	2,48
F45E0826L18	12	1/2"	08	M26 x 1.5	18	32	26	65	98	5,02
F45E1026L18	16	5/8"	10	M26 x 1.5	18	32	28	61.5	97	3,73
F45E1030L22	16	5/8"	10	M30 x 2	22	36	30	63.5	99	8,61
F45E1226L18	20	3/4"	12	M26 x 1.5	-	-	-	-	-	16,27
F45E1230L22	20	3/4"	12	M30 x 2	22	36	27	63	103.5	4,74
F45E1636L28	25	1"	16	M36 x 2	28	41	38.5	85.5	140	10,35
F45E2045L35	32	1.1/4"	20	M45 x 2	35	50	35	104.5	164.5	16,09
F45E2452L42	40	1.1/2"	24	M52 x 2	42	60	45	119	189	31,62

* Gekrimpte Mutter / Crimping nut