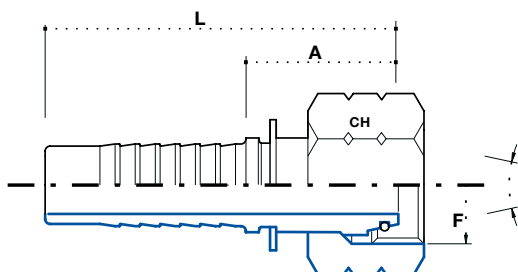


ME0314S6	5	3/16"	03	M14 x 1.5	6	-	14	24	50
ME0316S8	5	3/16"	03	M16 x 1.5	8	-	17	25	50
ME0414S6	6	1/4"	04	M14 x 1.5	6	-	14	24	53
ME0416S8	6	1/4"	04	M16 x 1.5	8	-	17	25	53
ME0418S10	6	1/4"	04	M18 x 1.5	10	-	19	25	53
ME0420S12	6	1/4"	04	M20 x 1.5	12	-	22	27	55
ME0518S10	8	5/16"	05	M18 x 1.5	10	-	19	25	53
ME0520S12	8	5/16"	05	M20 x 1.5	12	-	22	26.5	55
ME0618S10	10	3/8"	06	M18 x 1.5	10	-	19	26	55
ME0620S12	10	3/8"	06	M20 x 1.5	12	-	22	27	57
ME0622S14	10	3/8"	06	M22 x 1.5	14	-	24	29	59.5
ME0822S14	12	1/2"	08	M22 x 1.5	14	-	24	30	63
ME0824S16	12	1/2"	08	M24 x 1.5	16	-	27	31	64
ME1030S20	16	5/8"	10	M30 x 2	20	-	32	33	69
ME1230S20	20	3/4"	12	M30 x 2	20	-	32	34	75
ME1236S25	20	3/4"	12	M36 x 2	25	-	38	36	76.5
ME1636S25	25	1"	16	M36 x 2	25	-	38	38.5	93.5
ME1642S30	25	1"	16	M42 x 2	30	-	46	42	96
ME2042S30	32	1.1/4"	20	M42 x 2	30	-	46	42	103
ME2052S38	32	1.1/4"	20	M52 x 2	38	-	55	46	105
ME2452S38	40	1.1/2"	24	M52 x 2	38	-	55	46	117

**DKO-S Innengewinde mit
O-ring 24° Konus**

O-ring metric female 24°
cone h.t.

**DKO-S ниппель, конус 24° с
уплотнительным резиновым
кольцом, метрический
тяжёлый ряд**

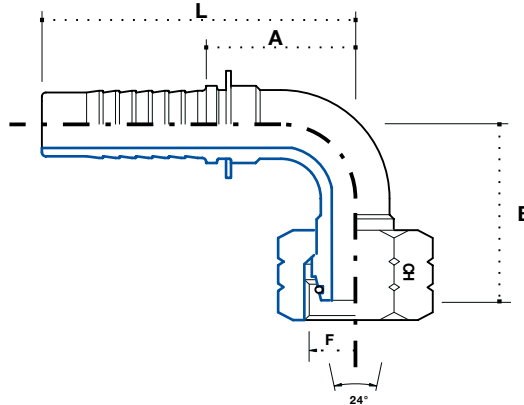


Artikel Code	Schlauch / Hose			Gewinde / Thread F	Tubo mm	Abmessung / Dimension mm				Euro
	DN	Inch Inches	Size			-	CH	A	L	
FE0314S6	5	3/16"	03	M14 x 1.5	6	-	17	25.5	50	2,99
FE0316S8	5	3/16"	03	M16 x 1.5	8	-	19	25.5	50	2,05
FE0414S6	6	1/4"	04	M14 x 1.5	6	-	17	25.5	53	0,80
FE0416S8	6	1/4"	04	M16 x 1.5	8	-	19	26	54	1,06
FE0418S10	6	1/4"	04	M18 x 1.5	10	-	22	26	54	1,10
FE0420S12	6	1/4"	04	M20 x 1.5	12	-	24	26	54	1,60
FE0518S10	8	5/16"	05	M18 x 1.5	10	-	22	26.5	54.5	1,28
FE0520S12	8	5/16"	05	M20 x 1.5	12	-	24	26	54	1,09
FE0618S10	10	3/8"	06	M18 x 1.5	10	-	22	26.5	56.5	2,28
FE0620S12	10	3/8"	06	M20 x 1.5	12	-	24	26.5	54.5	1,14
FE0622S14	10	3/8"	06	M22 x 1.5	14	-	27	27	57	1,40
FE0822S14	12	1/2"	08	M22 x 1.5	14	-	27	27.5	60.5	2,07
FE0824S16	12	1/2"	08	M24 x 1.5	16	-	30	32	65	1,64
FE1030S20	16	5/8"	10	M30 x 2	20	-	36	37	73	2,33
FE1230S20	10	3/4"	12	M30 x 2	20	-	36	37.5	78.5	3,68
FE1236S25	20	3/4"	12	M36 x 2	25	-	46	38.5	79.5	3,96
FE1636S25	25	1"	16	M36 x 2	25	-	46	39.5	94.5	6,27
FE1642S30	25	1"	16	M42 x 2	30	-	50	40.5	95.5	6,19
FE2042S30	32	1.1/4"	20	M42 x 2	30	-	50	41.5	102	14,08
FE2052S38	32	1.1/4"	20	M52 x 2	38	-	60	47	107.5	11,45
FE2452S38	40	1.1/2"	24	M52 x 2	38	-	60	47	118	25,05

DKO-S 90° Bogen Innengewinde mit O-ring 24° Konus

90° O-ring metric swept elbow
24° cone h.t.

DKO-S угловой ниппель 90°,
конус 24° с уплотнительным
резиновым кольцом, тяжёлый
ряд



3

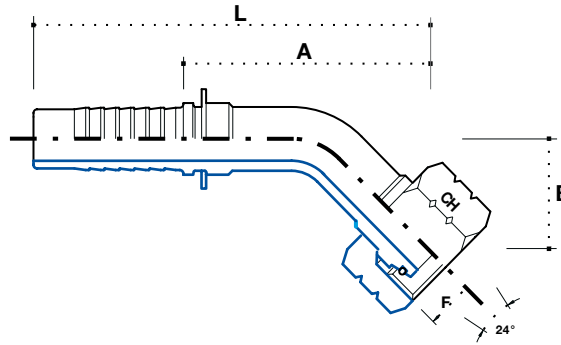
Artikel Code	Schlauch / Hose			Gewinde / Thread F	Tubo mm	Abmessung / Dimension mm				Euro
	DN	Inch Inches	Size			CH	B	A	L	
F90E0314S6	5	3/16"	03	M14 x 1.5	6	17	31.5	29.5	53.5	5,47
F90E0316S8	5	3/16"	03	M16 x 1.5	8	19	31.5	29.5	53.5	8,61
*F90E0414S6	6	1/4"	04	M14 x 1.5	6	17	31.5	29.5	57	3,59
F90E0416S8	6	1/4"	04	M16 x 1.5	8	19	31.5	29.5	57	1,88
F90E0418S10	6	1/4"	04	M18 x 1.5	10	22	32.5	29	56.5	2,20
F90E0420S12	6	1/4"	04	M20 x 1.5	12	24	30.5	27	55	3,53
F90E0518S10	8	5/16"	05	M18 x 1.5	10	22	32.5	31	59	3,34
F90E0520S12	8	5/16"	05	M20 x 1.5	12	24	37	29	57	2,20
*F90E0618S10	10	3/8"	06	M18 x 1.5	10	22	38	33	63	4,70
F90E0620S12	10	3/8"	06	M20 x 1.5	12	24	37.5	35.5	65	2,28
F90E0622S14	10	3/8"	06	M22 x 1.5	14	27	42	34	64	3,02
F90E0822S14	12	1/2"	08	M22 x 1.5	14	27	44	39.5	72	4,70
F90E0824S16	12	1/2"	08	M24 x 1.5	16	30	45	39.5	72	2,99
F90E1030S20	16	5/8"	10	M30 x 2	20	36	56	48.5	84	2,79
F90E1230S20	20	3/4"	12	M30 x 2	20	36	59	56.5	97	6,10
F90E1236S25	20	3/4"	12	M36 x 2	25	46	59	56.5	97	7,13
F90E1636S25	25	1"	16	M36 x 2	25	46	75	73	127	12,54
F90E1642S30	25	1"	16	M42 x 2	30	50	75	73	127	11,23
F90E2042S30	32	1.1/4"	20	M42 x 2	30	50	86	92	152	25,22
F90E2052S38	32	1.1/4"	20	M52 x 2	38	60	86	92	152	23,95
F90E2452S38	40	1.1/2"	24	M52 x 2	38	60	94	99	170	54,77

* Gekrimpte Mutter / Crimping nut

DKO-S 45° Bogen Innengewinde mit O-ring 24° Konus

45° O-ring metric swept elbow
24° cone h.t.

DKO-S угловой ниппель 45°,
конус 24° с уплотнительным
резиновым кольцом, тяжёлый
ряд



Artikel Code	Schlauch / Hose			Gewinde / Thread F	Tubo mm	Abmessung / Dimension mm				Euro
	DN	Inch Inches	Size			CH	B	A	L	
F45E0314S6	5	3/16"	03	M14 x 1.5	6	17	15	37	65	6,04
F45E0316S8	5	3/16"	03	M16 x 1.5	8	19	15	37	65	9,46
*F45E0414S6	6	1/4"	04	M14 x 1.5	6	17	17	40	68	3,96
F45E0416S8	6	1/4"	04	M16 x 1.5	8	19	17	50	78	2,05
F45E0418S10	6	1/4"	04	M18 x 1.5	10	22	17	48.5	76	2,42
F45E0420S12	6	1/4"	04	M20 x 1.5	12	24	17	48.5	76	3,88
*F45E0518S10	8	5/16"	05	M18 x 1.5	10	22	17	52.5	80	3,88
F45E0520S12	8	5/16"	05	M20 x 1.5	12	24	20	50	78	2,40
F45E0618S10	10	3/8"	06	M18 x 1.5	10	22	20	55	85	5,16
F45E0620S12	10	3/8"	06	M20 x 1.5	12	24	17	57	86.5	2,44
F45E0622S14	10	3/8"	06	M22 x 1.5	14	27	19	59	88.5	2,94
F45E0822S14	12	1/2"	08	M22 x 1.5	14	27	22	65	98	5,16
F45E0824S16	12	1/2"	08	M24 x 1.5	16	30	22	66.5	99	3,21
F45E1030S20	16	5/8"	10	M30 x 2	20	36	26	64.5	100	4,66
F45E1230S20	20	3/4"	12	M30 x 2	20	36	27	64	104.5	6,73
F45E1236S25	20	3/4"	12	M36 x 2	25	46	28	70	110	6,71
F45E1636S25	25	1"	16	M36 x 2	25	46	38	88.5	143	13,48
F45E1642S30	25	1"	16	M42 x 2	30	50	38	89	144	12,91
F45E2042S30	32	1.1/4"	20	M42 x 2	30	50	35	104.5	164.5	27,17
F45E2052S38	32	1.1/4"	20	M52 x 2	38	60	35	104.5	164.5	27,13
F45E2452S38	40	1.1/2"	24	M52 x 2	38	60	45	119	189	60,25

* Gekrimpte Mutter / Crimping nut