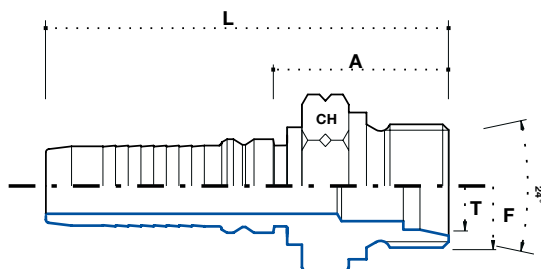


**CES metrisch 24° Konus
Interlock**

**Metric male 24° cone h.t.
Interlock**

**СЕС ниппель interlock, конус
24°, метрический**

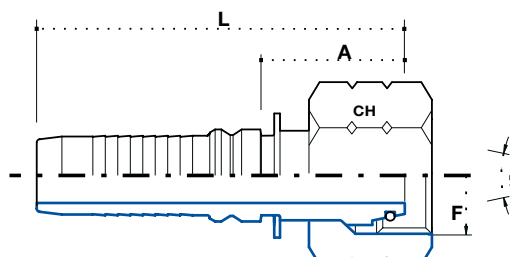


Artikel Code	Schlauch / Hose			Gewinde / Thread	Tubo mm	Abmessung / Dimension mm				Euro
	DN	Inch Inches	Size	F		-	CH	A	L	
KME1230S20	20	3/4"	12	M30 x 2	20	-	32	31.5	93.5	16,13
KME1236S25	20	3/4"	12	M36 x 2	25	-	38	33.5	95.5	6,73
KME1636S25	25	1"	16	M36 x 2	25	-	38	36	108	18,70
KME1642S30	25	1"	16	M42 x 2	30	-	46	39.5	111.5	8,61
KME2042S30	32	1.1/4"	20	M42 x 2	30	-	46	40.5	129	25,37
KME2052S38	32	1.1/4"	20	M52 x 2	38	-	55	44.5	133	13,31
KME2452S38	40	1.1/2"	24	M52 x 2	38	-	55	44.5	138	30,75

**DKO-S Innengewinde mit
O-ring 24° Konus Interlock**

**O-ring metric female h.t. 24°
cone Interlock**

**DKO-S ниппель interlock,
конус 24° с уплотнительным
резиновым кольцом,
метрический**



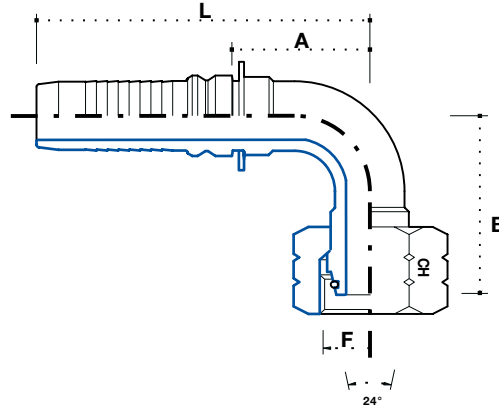
5

Artikel Code	Schlauch / Hose			Gewinde / Thread F	Tubo mm	Abmessung / Dimension mm				Euro
	DN	Inch Inches	Size			-	CH	A	L	
KFE1230S20	20	3/4"	12	M30 x 2	20	-	36	35	97	12,31
KFE1236S25	20	3/4"	12	M36 x 2	25	-	46	36	98	10,94
KFE1636S25	25	1"	16	M36 x 2	25	-	46	37	109	17,67
KFE1642S30	25	1"	16	M42 x 2	30	-	50	38	110	9,69
KFE2042S30	32	1.1/4"	20	M42 x 2	30	-	50	40	128.5	34,20
KFE2052S38	32	1.1/4"	20	M52 x 2	38	-	60	45.5	134	15,73
KFE2452S38	40	1.1/2"	24	M52 x 2	38	-	60	45.5	139	49,22

DKO-S 90° Bogen Innengewinde mit O-ring 24° Konus Interlock

90° O-ring metric female h.t. 24° cone Interlock

DKO-S угловой ниппель 90°, interlock, конус 24° с уплотнительным резиновым кольцом, метрический

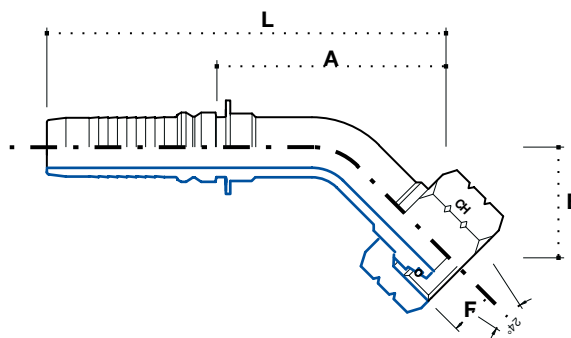


Artikel Code	Schlauch / Hose			Gewinde / Thread F	Tubo mm	Abmessung / Dimension mm				Euro
	DN	Inch Inches	Size			CH	B	A	L	
KF90E1230S20	20	3/4"	12	M30 x 2	20	36	59	54	116	15,42
KF90E1236S25	20	3/4"	12	M36 x 2	25	46	59	54	116	15,82
KF90E1636S25	25	1"	16	M36 x 2	25	46	75	70.5	142.5	24,16
KF90E1642S30	25	1"	16	M42 x 2	30	50	75	70.5	142.5	17,21
KF90E2042S30	32	1.1/4"	20	M42 x 2	30	50	86	90.5	179	49,99
KF90E2052S38	32	1.1/4"	20	M52 x 2	38	60	86	90.5	179	25,11
KF90E2452S38	40	1.1/2"	24	M52 x 2	38	60	94	97.5	191	88,04

DKO-S 45° Bogen Innengewinde mit O-ring 24° Konus Interlock

45° O-ring metric female h.t. 24° cone Interlock

DKO-S угловой ниппель 45°, interlock конус 24° с уплотнительным резиновым кольцом, метрический



5

Artikel Code	Schlauch / Hose			Gewinde / Thread F	Tubo mm	Abmessung / Dimension mm				Euro
	DN	Inch Inches	Size			CH	B	A	L	
KF45E1230S20	20	3/4"	12	M30 x 2	20	36	27	61.5	123.5	12,37
KF45E1236S25	20	3/4"	12	M36 x 2	25	46	28	67.5	129.5	15,82
KF45E1636S25	25	1"	16	M36 x 2	25	46	38	86	158	24,17
KF45E1642S30	25	1"	16	M42 x 2	30	50	38	86.5	158.5	15,42
KF45E2042S30	32	1.1/4"	20	M42 x 2	30	50	35	103	191.5	49,99
KF45E2052S38	32	1.1/4"	20	M52 x 2	38	60	35	103	191.5	22,86
KF45E2452S38	40	1.1/2"	24	M52 x 2	38	60	45	117.5	211	88,04