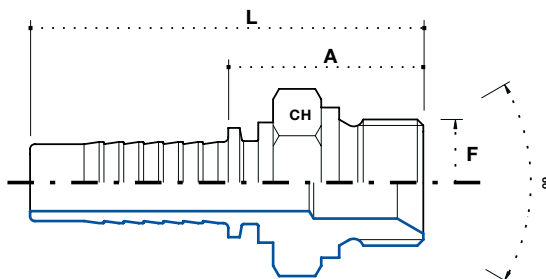


**AGR 60° Innenkonus
(BSP-Gewinde)**

BSP male parallel 60°

AGR ниппель, внутренний
конус 60°, BSP резьба

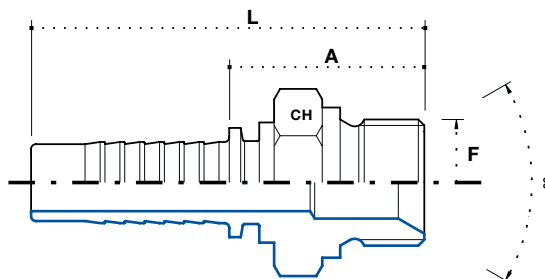


Artikel Code	Schlauch / Hose			Gewinde / Thread		Abmessung / Dimension mm				Euro
	DN	Inch Inches	Size			F	-	CH	A	
MG0302	5	3/16"	03	1/8" - 28	-	-	15	21	45	1,40
MG0304	5	3/16"	03	1/4" - 19	-	-	19	26	51	1,88
MG0402	6	1/4"	04	1/8" - 28	-	-	15	21	49	1,23
MG0404	6	1/4"	04	1/4" - 19	-	-	19	27	55	0,91
MG0406	6	1/4"	04	3/8" - 19	-	-	22	29	57	1,28
MG0408	6	1/4"	04	1/2" - 14	-	-	27	32	60	2,11
MG0504	8	5/16"	05	1/4" - 19	-	-	19	27	55	1,43
MG0506	8	5/16"	05	3/8" - 19	-	-	22	29	57	1,17
MG0508	8	5/16"	05	1/2" - 14	-	-	27	32	60	2,14
MG0604	10	3/8"	06	1/4" - 19	-	-	19	27	57	1,43
MG0606	10	3/8"	06	3/8" - 19	-	-	22	29	59	1,06
MG0608	10	3/8"	06	1/2" - 14	-	-	27	32	62	1,48
MG0806	12	1/2"	08	3/8" - 19	-	-	19	29	62	1,65
MG0808	12	1/2"	08	1/2" - 14	-	-	27	33	66	1,48
MG0810	12	1/2"	08	5/8" - 14	-	-	28	35	68	2,45
MG0812	12	1/2"	08	3/4" - 14	-	-	32	36	69	3,00
MG1008	16	5/8"	10	1/2" - 14	-	-	27	33	69	3,14
MG1010	16	5/8"	10	5/8" - 14	-	-	28	35	71	2,40
MG1012	16	5/8"	10	3/4" - 14	-	-	32	36	72	2,74
MG1208	20	3/4"	12	1/2" - 14	-	-	27	34	75	5,64
MG1210	20	3/4"	12	5/8" - 14	-	-	28	36	77	6,10
MG1212	20	3/4"	12	3/4" - 14	-	-	32	37	78	2,51
MG1216	20	3/4"	12	1" - 11	-	-	38	40	80	5,96

**AGR 60° Innenkonus
(BSP-Gewinde)**

BSP male parallel 60°

**AGR ниппель, внутренний
конус 60°, BSP резьба**



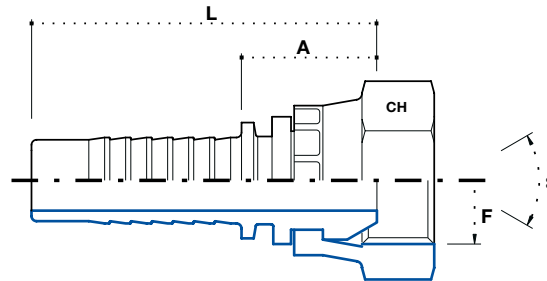
3

Artikel Code	Schlauch / Hose			Gewinde / Thread		Abmessung / Dimension mm				Euro
	DN	Inch Inches	Size			F	-	CH	A	
MG1612	25	1"	16	3/4" - 14	-	-	32	38	93	11,97
MG1616	25	1"	16	1" - 11	-	-	38	40	95	4,79
MG1620	25	1"	16	1.1/4" - 11	-	-	50	45	100	13,31
MG2020	32	1.1/4"	20	1.1/4" - 11	-	-	50	46	106	9,10
MG2024	32	1.1/4"	20	1.1/2" - 11	-	-	55	46	107	17,71
MG2424	40	1.1/2"	24	1.1/2" - 11	-	-	55	46	117	11,83
MG2432	40	1.1/2"	24	2" - 11	-	-	70	53	124	35,24
MG3232	50	2"	32	2" - 11	-	-	70	54	134	24,26

DKR 60° Konus (BSP-Gewinde)

BSP straight female 60°

**DKR ниппель, конус 60°, BSP
резьба**

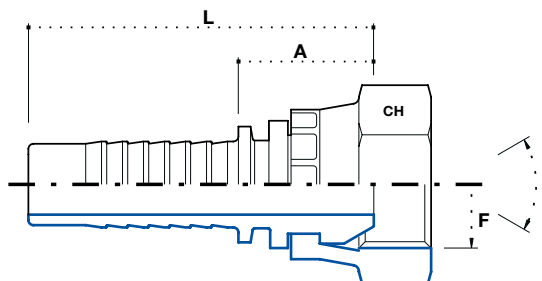


Artikel Code	Schlauch / Hose			Gewinde / Thread	F	Abmessung / Dimension mm				Euro
	DN	Inch Inches	Size			-	CH	A	L	
FDG0302	5	3/16"	03	1/8"-28	-	-	15	18	43	1,03
FDG0304	5	3/16"	03	1/4"-19	-	-	19	18	43	1,03
FDG0402	6	1/4"	04	1/8"-28	-	-	15	18	46	0,97
FDG0404	6	1/4"	04	1/4"-19	-	-	19	18	46	0,69
FDG0406	6	1/4"	04	3/8"-19	-	-	22	19	47	0,97
FDG0408	6	1/4"	04	1/2"-14	-	-	27	21	49	2,51
FDG0504	8	5/16"	05	1/4"-19	-	-	19	18	46	1,26
FDG0506	8	5/16"	05	3/8"-19	-	-	22	19	47	0,94
FDG0508	8	5/16"	05	1/2"-14	-	-	27	21	49	1,48
FDG0604	10	3/8"	06	1/4"-19	-	-	19	19	49	1,43
FDG0606	10	3/8"	06	3/8"-19	-	-	22	20	50	0,86
FDG0608	10	3/8"	06	1/2"-14	-	-	27	21	51	1,20
FDG0806	12	1/2"	08	3/8"-19	-	-	19	20	53	1,74
FDG0808	12	1/2"	08	1/2"-14	-	-	27	22	55	1,20
FDG0810	12	1/2"	08	5/8"-14	-	-	28	22	55	1,97
FDG0812	12	1/2"	08	3/4"-14	-	-	32	24	57	2,51
FDG1008	16	5/8"	10	1/2"-14	-	-	27	22	58	2,82
FDG1010	16	5/8"	10	5/8"-14	-	-	28	23	59	2,05
FDG1012	16	5/8"	10	3/4"-14	-	-	32	24	60	2,37
FDG1208	20	3/4"	12	1/2"-14	-	-	-	-	-	9,41
FDG1210	20	3/4"	12	5/8"-14	-	-	28	24	66	11,74
FDG1212	20	3/4"	12	3/4"-14	-	-	32	25	66	2,14
FDG1216	20	3/4"	12	1"-11	-	-	38	26	67	4,08

DKR 60° Konus (BSP-Gewinde)

BSP straight female 60°

DKR ниппель, конус 60°, BSP резьба

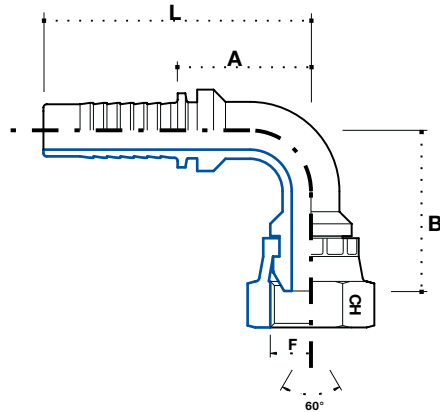


Artikel Code	Schlauch / Hose			Gewinde / Thread		Abmessung / Dimension mm				Euro
	DN	Inch Inches	Size			F	-	CH	A	
FDG1612	25	1"	16	3/4" - 14	-	-	-	-	-	12,20
FDG1616	25	1"	16	1" - 11	-	-	38	27	82	3,62
FDG1620	25	1"	16	1.1/4" - 11	-	-	50	30	85	8,81
FDG2020	32	1.1/4"	20	1.1/4" - 11	-	-	50	30	91	7,41
FDG2024	32	1.1/4"	20	1.1/4" - 11	-	-	55	32	93	15,66
FDG2424	40	1.1/2"	24	1.1/2" - 11	-	-	55	32	103	10,98

**DKR 90° Bogen 60° Konus
(BSP-Gewinde)**

BSP female 90° swept elbow

DKR угловой ниппель 90°,
конус 60°, BSP резьба

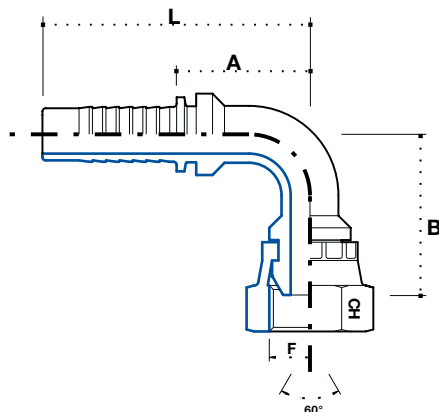


Artikel Code	Schlauch / Hose			Gewinde / Thread		Abmessung / Dimension mm				Euro
	DN	Inch Inches	Size			F	CH	B	A	
F90G0302	5	3/16"	03	1/8" - 28	-	15	29	23	47.5	2,20
F90G0304	5	3/16"	03	1/4" - 19	-	19	29	23	47.5	2,51
F90G0402	6	1/4"	04	1/8" - 28	-	15	29	23	51	2,34
F90G0404	6	1/4"	04	1/4" - 19	-	19	29	23	51	1,34
F90G0406	6	1/4"	04	3/8" - 19	-	22	32	23	51	1,85
F90G0408	6	1/4"	04	1/2" - 14	-	-	-	-	-	4,30
F90G0504	8	5/16"	05	1/4" - 19	-	19	33.5	31.5	59.5	2,37
F90G0506	8	5/16"	05	3/8" - 19	-	22	35.5	31.5	59.5	1,81
F90G0508	8	5/16"	05	1/2" - 14	-	27	39	31.5	59.5	4,30
F90G0604	10	3/8"	06	1/4" - 19	-	19	37	33	63	3,68
F90G0606	10	3/8"	06	3/8" - 19	-	22	38	33	63	1,65
F90G0608	10	3/8"	06	1/2" - 14	-	27	42	33	63	2,34
F90G0806	12	1/2"	08	3/8" - 19	-	22	43	39	72	4,08
F90G0808	12	1/2"	08	1/2" - 14	-	27	45	39	72	2,37
F90G0810	12	1/2"	08	5/8" - 14	-	28	45	39	72	3,53
F90G0812	12	1/2"	08	3/4" - 14	-	32	51	39	72	5,02
F90G1008	16	5/8"	10	1/2" - 14	-	27	54	49	85	5,25
F90G1010	16	5/8"	10	5/8" - 14	-	28	54	49	85	3,59
F90G1012	16	5/8"	10	3/4" - 14	-	32	56	49	85	4,31
F90G1208	20	3/4"	12	1/2" - 14	-	-	-	-	-	24,57
F90G1210	20	3/4"	12	5/8" - 14	-	-	-	-	-	24,60
F90G1212	20	3/4"	12	3/4" - 14	-	32	59	53.5	94.5	4,31
F90G1216	20	3/4"	12	1" - 11	-	38	65	53.5	94.5	8,47

**DKR 90° Bogen 60° Konus
(BSP-Gewinde)**

BSP female 90° swept elbow

**DKR угловой ниппель 90°,
конус 60°, BSP резьба**



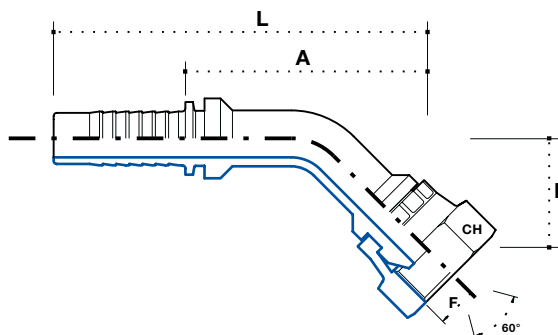
3

Artikel Code	Schlauch / Hose			Gewinde / Thread F		Abmessung / Dimension mm				Euro
	DN	Inch Inches	Size			CH	B	A	L	
F90G1612	25	1"	16	3/4" - 14	-	-	-	-	-	30,50
F90G1616	25	1"	16	1" - 11	-	38	72	73	128	7,68
F90G1620	25	1"	16	1.1/4" - 11	-	50	80	73	128	16,13
F90G2020	32	1.1/4"	20	1.1/4" - 11	-	50	93	89	150	14,57
F90G2024	32	1.1/4"	20	1.1/2" - 11	-	55	98.5	89	150	27,86
F90G2424	40	1.1/2"	24	1.1/2" - 11	-	55	114	101	172	25,38

**DKR 45° Bogen - Aufschraub-
konus 60° (BSP-Gewinde)**

BSP female 45° swept elbow

**DKR угловой ниппель 45°,
конус 60°, BSP резьба**

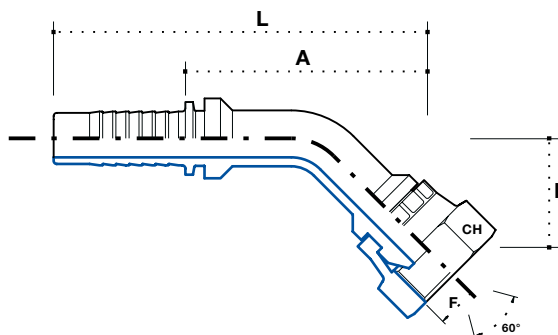


Artikel Code	Schlauch / Hose			Gewinde / Thread		Abmessung / Dimension mm				Euro
	DN	Inch Inches	Size			F	CH	B	A	
F45G0302	5	3/16"	03	1/8" - 28	-	15	17	40	65	2,20
F45G0304	5	3/16"	03	1/4" - 19	-	19	17	40	65	2,51
F45G0402	6	1/4"	04	1/8" - 28	-	15	17	40	68	2,37
F45G0404	6	1/4"	04	1/4" - 19	-	19	17	40	68	1,34
F45G0406	6	1/4"	04	3/8" - 19	-	22	20	43	71	1,80
F45G0408	6	1/4"	04	1/2" - 14	-	-	-	-	-	4,31
F45G0504	8	5/16"	05	1/4" - 19	-	19	20	51	79	2,38
F45G0506	8	5/16"	05	3/8" - 19	-	22	21	52	80	1,80
F45G0508	8	5/16"	05	1/2" - 14	-	27	24	55	83	4,31
F45G0604	10	3/8"	06	1/4" - 19	-	19	19	54	84	3,69
F45G0606	10	3/8"	06	3/8" - 19	-	22	20	55	85	1,65
F45G0608	10	3/8"	06	1/2" - 14	-	27	23	58	88	2,37
F45G0806	12	1/2"	08	3/8" - 19	-	22	20	63	96	4,08
F45G0808	12	1/2"	08	1/2" - 14	-	27	23	65	98	2,37
F45G0810	12	1/2"	08	5/8" - 14	-	28	23	65	98	3,55
F45G0812	12	1/2"	08	3/4" - 14	-	32	21	66	99	5,02
F45G1008	16	5/8"	10	1/2" - 14	-	27	25	63	99	5,25
F45G1010	16	5/8"	10	5/8" - 14	-	28	25	64	99	3,59
F45G1012	16	5/8"	10	3/4" - 14	-	32	26	64	100	4,31
F45G1208	20	3/4"	12	1/2" - 14	-	27	28	62	103	24,57
F45G1210	20	3/4"	12	5/8" - 14	-	28	29	63	104	24,60
F45G1212	20	3/4"	12	3/4" - 14	-	32	29	63	104	4,31
F45G1216	20	3/4"	12	1" - 11	-	38	31	65	105	8,47

**DKR 45° Bogen - Aufschraub-
konus 60° (BSP-Gewinde)**

BSP female 45° swept elbow

**DKR угловой ниппель 45°,
конус 60°, BSP резьба**

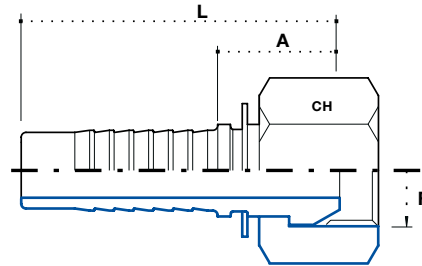


Artikel Code	Schlauch / Hose			Gewinde / Thread		Abmessung / Dimension mm				Euro
	DN	Inch Inches	Size			F	CH	B	A	
F45G1612	25	1"	16	3/4" - 14	-	32	39	88	143	30,50
F45G1616	25	1"	16	1" - 11	-	38	41	90	145	7,68
F45G1620	25	1"	16	1.1/4" - 11	-	50	44	93	148	16,13
F45G2020	32	1.1/4"	20	1.1/4" - 11	-	50	44	102	163	14,57
F45G2024	32	1.1/4"	20	1.1/2" - 11	-	55	45	103	164	27,85
F45G2424	40	1.1/2"	24	1.1/2" - 11	-	55	45	118	189	25,37

**DKR 60° Konus (BSP-Gewinde)
+ Überwurfmutter**

BSP female free nut

DKR ниппель, конус 60°, BSP
резьба, гайка

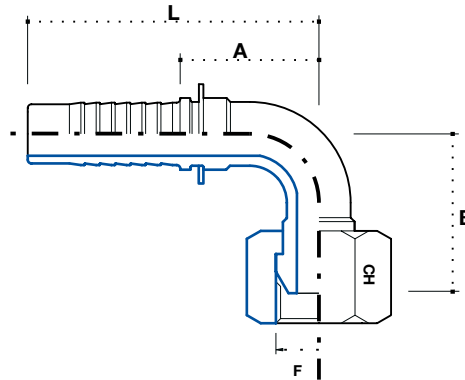


Artikel Code	Schlauch / Hose			Gewinde / Thread		Abmessung / Dimension mm				Euro
	DN	Inch Inches	Size			F	CH	B	A	
FDG0302SF	5	3/16"	03	1/8" - 28	-	-	15	18	43	1,11
FDG0304SF	5	3/16"	03	1/4" - 19	-	-	19	18	43	1,03
FDG0404SF	6	1/4"	04	1/4" - 19	-	-	19	18	46	0,68
FDG0406SF	6	1/4"	04	3/8" - 19	-	-	22	19	47	0,97
FDG0506SF	8	5/16"	05	3/8" - 19	-	-	22	19	47	0,94
FDG0606SF	10	3/8"	06	3/8" - 19	-	-	22	20	50	0,83
FDG0608SF	10	3/8"	06	1/2" - 14	-	-	27	21	51	1,17
FDG0808SF	12	1/2"	08	1/2" - 14	-	-	27	22	55	1,20

**DKR 90° Bogen 60° Konus
(BSP-Gewinde)
+ Überwurfmutter**

90° BSP female free nut

**DKR угловой ниппель 90°,
конус 60°, BSP резьба, гайка**



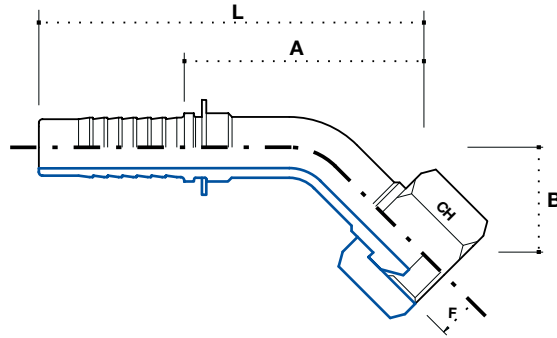
3

Artikel Code	Schlauch / Hose			Gewinde / Thread F		Abmessung / Dimension mm				Euro
	DN	Inch Inches	Size			CH	B	A	L	
F90G0302SF	5	3/16"	03	1/8" - 28	-	15	29	23	47.5	2,31
F90G0304SF	5	3/16"	03	1/4" - 19	-	19	29	23	47.5	2,62
F90G0404SF	6	1/4"	04	1/4" - 19	-	19	29	23	51	1,34
F90G0406SF	6	1/4"	04	3/8" - 19	-	22	32	23	51	1,80
F90G0506SF	8	5/16"	05	3/8" - 19	-	22	35.5	31.5	59.5	1,80
F90G0606SF	10	3/8"	06	3/8" - 19	-	22	38	33	63	1,65
F90G0608SF	10	3/8"	06	1/2" - 14	-	27	42	33	63	2,34
F90G0808SF	12	1/2"	08	1/2" - 14	-	27	45	39	72	2,34

**DKR 45° Bogen 60° Konus
(BSP-Gewinde)
+ Überwurfmutter**

45° BSP female free nut

**DKR угловой ниппель 45°,
конус 60°, BSP резьба, гайка**

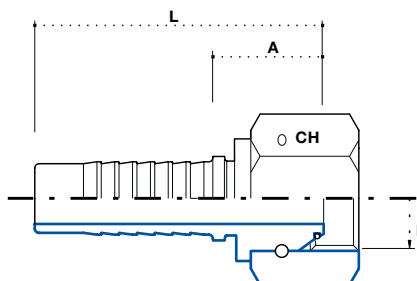


Artikel Code	Schlauch / Hose			Gewinde / Thread F		Abmessung / Dimension mm				Euro
	DN	Inch Inches	Size			CH	B	A	L	
F45G0302SF	5	3/16"	03	1/8" - 28	-	15	17	40	65	2,31
F45G0304SF	5	3/16"	03	1/4" - 19	-	19	17	40	65	2,62
F45G0404SF	6	1/4"	04	1/4" - 19	-	19	17	40	68	1,34
F45G0406SF	6	1/4"	04	3/8" - 19	-	22	20	43	71	1,80
F45G0506SF	8	5/16"	05	3/8" - 19	-	22	21	52	80	1,80
F45G0606SF	10	3/8"	06	3/8" - 19	-	22	20	55	85	1,65
F45G0608F	10	3/8"	06	1/2" - 14	-	27	23	58	88	2,34
F45G0808SF	12	1/2"	08	1/2" - 14	-	27	23	65	98	2,34

**DKOR 60° Konus mit O-ring
(BSP-Gewinde) + gestiftete
Überwurfmutter**

**BSP O-ring female thrust
wired nut**

**DKOR ниппель, конус 60° с
уплотнительным резиновым
кольцом, гайка со штифтом,
BSP резьба**

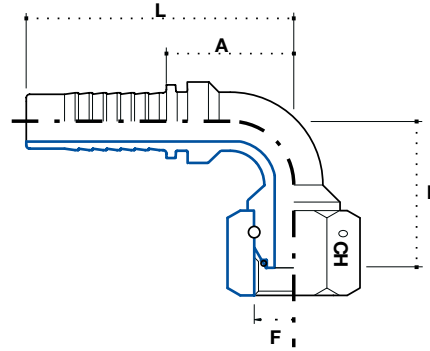


Artikel Code	Schlauch / Hose			Gewinde / Thread F		Abmessung / Dimension mm				Euro
	DN	Inch Inches	Size			-	CH	A	L	
FDG1212SP	20	3/4"	12	3/4" - 14	-	-	32	25	66	2,25
FDG1216SP	20	3/4"	12	1" - 11	-	-	38	26	67	4,54
FDG1616SP	25	1"	16	1" - 11	-	-	38	27	82	3,82
FDG1620SP	25	1"	16	1.1/4" - 11	-	-	50	30	85	9,73
FDG2020SP	32	1.1/4"	20	1.1/4" - 11	-	-	50	30	91	7,67
FDG2024SP	32	1.1/4"	20	1.1/2" - 11	-	-	55	32	93	16,76
FDG2424SP	40	1.1/2"	24	1.1/2" - 11	-	-	55	32	103	12,14
FDG2432SP	40	1.1/2"	24	2" - 11	-	-	70	33	104	28,79
FDG3232SP	50	2"	32	2" - 11	-	-	70	34	114	24,12

DKOR 90° Bogen 60° Konus mit O-ring (BSP-Gewinde) + gestiftete Überwurfmutter

90° BSP O-ring thrust wired nut

DKOR угловой ниппель 90°, конус 60° с уплотнительным резиновым кольцом, гайка со штифтом, BSP резьба

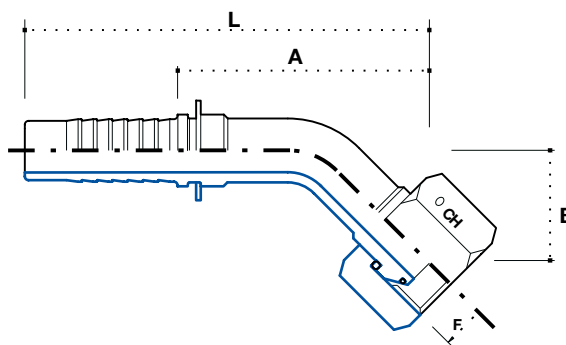


Artikel Code	Schlauch / Hose			Gewinde / Thread		Abmessung / Dimension mm				Euro
	DN	Inch Inches	Size			F	CH	B	A	
F90G1212SP	20	3/4"	12	3/4"-14	-	32	59	53.5	94.5	5,02
F90G1216SP	20	3/4"	12	1"-11	-	38	65	53.5	94.5	11,35
F90G1616SP	25	1"	16	1"-11	-	38	72	73	128	9,41
F90G1620SP	25	1"	16	1.1/4"-11	-	50	80	73	128	19,59
F90G2020SP	32	1.1/4"	20	1.1/4"-11	-	50	93	89	150	16,45
F90G2024SP	32	1.1/4"	20	1.1/2"-11	-	55	98.5	89	150	34,88
F90G2424SP	40	1.1/2"	24	1.1/2"-11	-	55	114	101	172	29,73
F90G2432SP	40	1.1/2"	24	2"-11	-	70	118	101	172	66,26
F90G3232SP	50	2"	32	2"-11	-	70	136	135	215	60,26

DKOR 45° Bogen 60° Konus mit O-ring (BSP-Gewinde) + gestiftete Überwurfmutter

45° BSP o-ring thrust wired nut

DKOR угловой ниппель 45°, конус 60° с уплотнительным резиновым кольцом, гайка со штифтом, BSP резьба

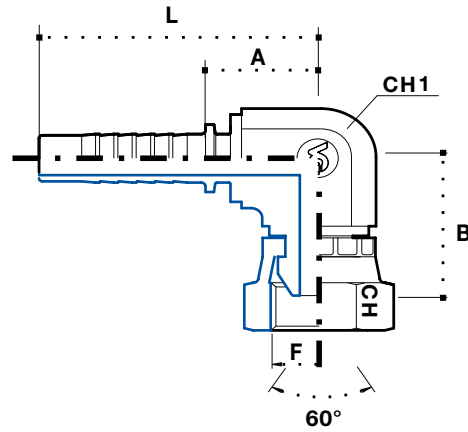


Artikel Code	Schlauch / Hose			Gewinde / Thread		Abmessung / Dimension mm				Euro
	DN	Inch Inches	Size			F	CH	B	A	
F45G1212SP	20	3/4"	12	3/4" - 14	-	32	29	63	104	5,02
F45G1216SP	20	3/4"	12	1" - 11	-	38	31	65	105	11,35
F45G1616SP	25	1"	16	1" - 11	-	38	41	90	145	9,41
F45G1620P	25	1"	16	1.1/4" - 11	-	50	44	93	148	19,59
F45G2020SP	32	1.1/4"	20	1.1/4" - 11	-	50	44	102	163	16,45
F45G2024SP	32	1.1/4"	20	1.1/2" - 11	-	55	45	103	164	34,88
F45G2424SP	40	1.1/2"	24	1.1/2" - 11	-	55	45	118	189	29,73
F45G2432SP	40	1.1/2"	24	2" - 11	-	70	48	121	192	66,26
F45G3232SP	50	2"	32	2" - 11	-	70	68	156	236	60,26

DKR 90° kompakt

BSP compact female 90°
swept elbow

DKR угловой ниппель 90°
КОМПАКТ

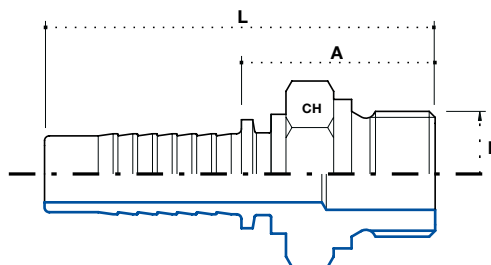


Artikel Code	Schlauch / Hose			Gewinde / Thread	Abmessung / Dimension mm					Euro
	DN	Inch Inches	Size		F	CH1	CH	B	A	
F90G0404K	6	1/4"	04	1/4" - 19	14	19	25	19	47	4,67
F90G0406K	6	1/4"	04	3/8" - 19	19	22	28	20.5	48.5	4,99
F90G0506K	8	5/16"	05	3/8" - 19	19	22	28	20.5	48.5	4,53
F90G0606K	10	3/8"	06	3/8" - 19	19	22	28	20.5	50.5	3,14
F90G0608K	10	3/8"	06	1/2" - 14	22	27	34	23.5	53.5	6,41
F90G0808K	12	1/2"	08	1/2" - 14	22	27	34	23.5	57	6,44
F90G1212K	20	3/4"	12	3/4" - 14	27	32	39.5	25	64	9,04
F90G1616K	25	1"	16	1" - 11	33	38	-	-	-	*

AGR-F Flachdichtend (BSP-Gewinde)

BSP parallel flat seat male

AGR - F ниппель, BSP
резьба, параллельное прямое
соединение

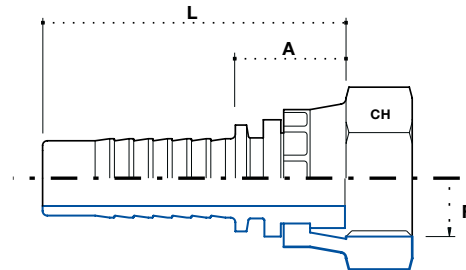


Artikel Code	Schlauch / Hose			Gewinde / Thread	F	Abmessung / Dimension mm				Euro
	DN	Inch Inches	Size			-	CH	A	L	
MGSP0404	6	1/4"	04	1/4" - 19	-	-	19	27	55	3,53
MGSP0406	6	1/4"	04	3/8" - 19	-	-	22	29	57	4,70
MGSP0506	8	5/16"	05	3/8" - 19	-	-	22	29	57	4,70
MGSP0606	10	3/8"	06	3/8" - 19	-	-	22	28.5	58.5	3,76
MGSP0608	10	3/8"	06	1/2" - 14	-	-	27	32	62	2,68
MGSP0808	12	1/2"	08	1/2" - 14	-	-	27	32	65	4,22
MGSP0810	12	1/2"	08	5/8" - 14	-	-	28	35	68	5,47
MGSP0812	12	1/2"	08	3/4" - 14	-	-	32	36	69	5,87
MGSP1010	16	5/8"	10	5/8" - 14	-	-	28	35	71	4,70
MGSP1012	16	5/8"	10	3/4" - 14	-	-	32	36	72	5,70
MGSP1212	20	3/4"	12	3/4" - 14	-	-	32	37	78	5,64
MGSP1216	20	3/4"	12	1" - 11	-	-	38	40	80	*
MGSP1616	25	1"	16	1" - 11	-	-	38	39.5	94.5	10,94
MGSP2020	32	1.1/4"	20	1.1/4" - 11	-	-	50	46	106	15,66

**DKR-F Flachdichtend
(BSP-Gewinde)**

BSP parallel flat seat male

DKR - F ниппель, BSP резьба

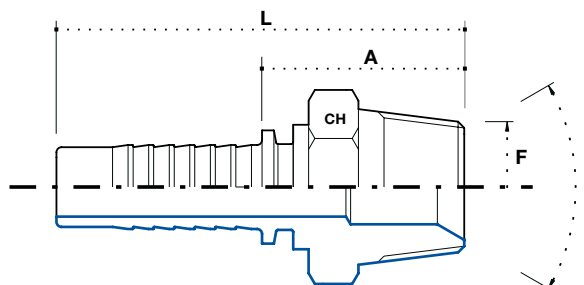


Artikel Code	Schlauch / Hose			Gewinde / Thread	F	Abmessung / Dimension mm				Euro
	DN	Inch Inches	Size			-	CH	A	L	
FDGSP0404	6	1/4"	04	1/4" - 19	-	-	19	14	42	1,35
FDGSP0406	6	1/4"	04	3/8" - 19	-	-	22	15	43	2,69
FDGSP0506	8	5/16"	05	3/8" - 19	-	-	22	15	43	2,65
FDGSP0606	10	3/8"	06	3/8" - 19	-	-	22	16	46	1,57
FDGSP0608	10	3/8"	06	1/2" - 14	-	-	27	17	47	1,49
FDGSP0808	12	1/2"	08	1/2" - 14	-	-	27	17	50	1,58
FDGSP0810	12	1/2"	08	5/8" - 14	-	-	28	17	50	3,91
FDGSP0812	12	1/2"	08	3/4" - 14	-	-	32	19	52	2,77
FDGSP1010	16	5/8"	10	5/8" - 14	-	-	28	17	53	3,14
FDGSP1012	16	5/8"	10	3/4" - 14	-	-	32	20	56	3,59
FDGSP1212	20	3/4"	12	3/4" - 14	-	-	32	21	62	2,83
FDGSP1216	20	3/4"	12	1" - 11	-	-	38	22	63	5,47
FDGSP1616	25	1"	16	1" - 11	-	-	38	23	78	5,03
FDGSP2020	32	1.1/4"	20	1.1/4" - 11	-	-	50	26	87	8,08

AGR-K konisch (BSP)

BSP taper male 60°

AGR - К ниппель, конический,
BSP резьба



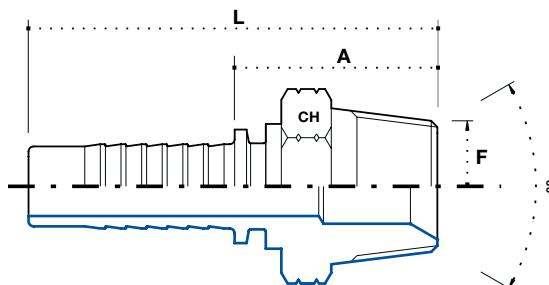
3

Artikel Code	Schlauch / Hose			Gewinde / Thread	F	Abmessung / Dimension mm				Euro
	DN	Inch Inches	Size			-	CH	A	L	
MGK0302	5	3/16"	03	1/8" - 28	-	-	12	22	47	1,37
MGK0304	5	3/16"	03	1/4" - 19	-	-	15	22	47	3,62
MGK0402	6	1/4"	04	1/8" - 28	-	-	12	22.5	50.5	1,11
MGK0404	6	1/4"	04	1/4" - 19	-	-	15	27	55	1,03
MGK0406	6	1/4"	04	3/8" - 19	-	-	19	28	56	1,80
MGK0504	8	5/16"	05	1/4" - 19	-	-	15	27	55	2,42
MGK0506	8	5/16"	05	3/8" - 19	-	-	19	28	56	1,74
MGK0604	10	3/8"	06	1/4" - 19	-	-	15	28	56	1,80
MGK0606	10	3/8"	06	3/8" - 19	-	-	19	28	61	1,03
MGK0608	10	3/8"	06	1/2" - 14	-	-	22	34	67.5	1,97
MGK0806	12	1/2"	08	3/8" - 19	-	-	19	28	63	2,62
MGK0808	12	1/2"	08	1/2" - 14	-	-	22	34.5	67.5	1,48
MGK1008	16	5/8"	10	1/2" - 14	-	-	22	34.5	70.5	2,71
MGK1012	16	5/8"	10	3/4" - 14	-	-	27	36.5	72.5	4,28
MGK1212	20	3/4"	12	3/4" - 14	-	-	27	37	78	2,22
MGK1216	20	3/4"	12	1" - 11	-	-	36	45	86	5,50
MGK1616	25	1"	16	1" - 11	-	-	36	46	101	4,67
MGK1620	25	1"	16	1.1/4" - 11	-	-	46	45.5	100	11,43
MGK2020	32	1.1/4"	20	1.1/4" - 11	-	-	46	46	106.3	9,04
MGK2024	32	1.1/4"	20	1.1/2" - 11	-	-	50	47	108	*
MGK2424	40	1.1/2"	24	1.1/2" - 11	-	-	50	47.3	118	11,93
MGK3232	50	2"	32	2" - 11	-	-	65	57	137	22,77

AGN 60° Innenkonus (NPTF)

NPTF male 60°

AGN ниппель, внутренний конус 60°, NPTF резьба



Artikel Code	Schlauch / Hose			Gewinde / Thread		Abmessung / Dimension mm				Euro
	DN	Inch Inches	Size			F	-	CH	A	
MNPT0302	5	3/16"	03	1/8" - 27	-	-	12	22	47	1,12
MNPT0304	5	3/16"	03	1/4" - 18	-	-	15	22	47	2,39
MNPT0402	6	1/4"	04	1/8" - 27	-	-	12	22.5	50.5	0,92
MNPT0404	6	1/4"	04	1/4" - 18	-	-	15	27	55	0,84
MNPT0406	6	1/4"	04	3/8" - 18	-	-	19	28	56	1,15
MNPT0504	8	5/16"	05	1/4" - 18	-	-	15	27	55	1,23
MNPT0506	8	5/16"	05	3/8" - 18	-	-	19	28	56	1,28
MNPT0508	8	5/16"	05	1/2" - 14	-	-	22	28	56	1,51
MNPT0604	10	3/8"	06	1/4" - 18	-	-	15	28	56	1,09
MNPT0606	10	3/8"	06	3/8" - 18	-	-	19	28	58	1,09
MNPT0608	10	3/8"	06	1/2" - 14	-	-	22	34	67.5	1,40
MNPT0806	12	1/2"	08	3/8" - 18	-	-	19	28	63	1,57
MNPT0808	12	1/2"	08	1/2" - 14	-	-	22	34.5	67.5	1,41
MNPT0812	12	1/2"	08	3/4" - 14	-	-	27	34.5	67.5	3,23
MNPT1008	16	5/8"	10	1/2" - 14	-	-	22	34.5	70.5	2,49
MNPT1012	16	5/8"	10	3/4" - 14	-	-	27	36.5	72.5	2,39
MNPT1212	20	3/4"	12	3/4" - 14	-	-	27	37	78	1,88
MNPT1216	20	3/4"	12	1" - 11.5	-	-	36	45	86	4,20
MNPT1612	25	1"	16	3/4" - 14	-	-	27	38	93	10,87
MNPT1616	25	1"	16	1" - 11.5	-	-	36	46	101	4,03
MNPT1620	25	1"	16	1.1/4" - 11.5	-	-	46	45.5	100	9,22
MNPT2020	32	1.1/4"	20	1.1/4" - 11.5	-	-	46	45.5	106.5	7,25
MNPT2424	40	1.1/2"	24	1.1/2" - 11.5	-	-	50	47	118	9,47
MNPT3232	50	2"	32	2" - 11.5	-	-	65	57	137	19,72