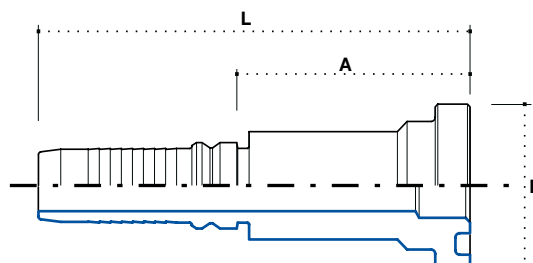


**Flanschanschluss
SAE 3000 PSI / SFL-I Interlock**

**Straight flange SAE 3000 PSI /
SFL-I Interlock**

**Фланцевое соединение SAE
3000 PSI / SFL- I interlock**

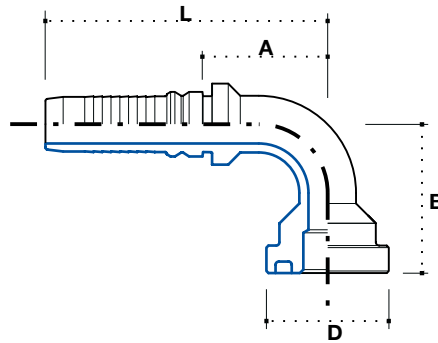


| Artikel Code | Schlauch / Hose | | | Flansch / Flange | | Abmessung / Dimension mm | | | | Euro |
|--------------|-----------------|-------------|------|------------------|---|--------------------------|------|------|-------|-------|
| | DN | Inch Inches | Size | | | F | - | D | A | |
| KFDL1212I | 20 | 3/4" | 12 | 3/4" | - | - | 38.1 | 56.7 | 118.5 | 8,47 |
| KFDL1216I | 20 | 3/4" | 12 | 1" | - | - | 44.5 | 48.7 | 119.5 | 12,37 |
| KFDL1612I | 25 | 1" | 16 | 3/4" | - | - | 38.1 | 47.6 | 119.7 | 32,41 |
| KFDL1616I | 25 | 1" | 16 | 1" | - | - | 44.5 | 47.6 | 119.7 | 9,78 |
| KFDL1620I | 25 | 1" | 16 | 1.1/4" | - | - | 50.8 | 64.6 | 136.7 | 15,02 |
| KFDL2020I | 32 | 1.1/4" | 20 | 1.1/4" | - | - | 50.8 | 68.7 | 155 | 14,08 |
| KFDL2024I | 32 | 1.1/4" | 20 | 1.1/2" | - | - | 60.3 | 78.7 | 167 | 21,43 |
| KFDL2424I | 40 | 1.1/2" | 24 | 1.1/2" | - | - | 60.3 | 68.5 | 162 | 19,49 |
| KFDL2432I | 40 | 1.1/2" | 24 | 2" | - | - | 71.4 | 70.5 | 164 | 33,89 |
| KFDL3232I | 50 | 2" | 32 | 2" | - | - | 71.4 | 70.5 | 171 | 26,45 |

**90° Flanschanschluss
SAE 3000 PSI / SFL-I Interlock**

90° SAE flange SAE 3000 PSI /
SFL-I Interlock

Угловое 90° фланцевое
соединение SAE 3000 PSI /
SFL-I interlock

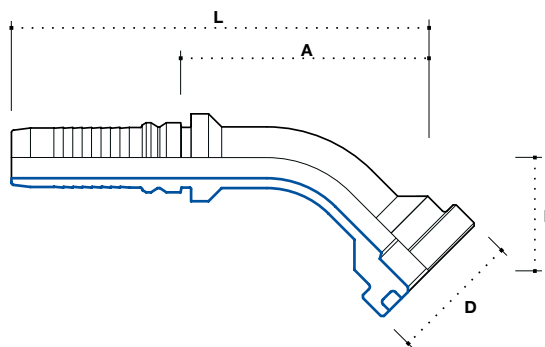


| Artikel Code | Flansch / Flange | | | Gewinde / Thread | | Abmessung / Dimension mm | | | | Euro |
|--------------|------------------|-------------|------|------------------|---|--------------------------|-----|------|-------|-------|
| | DN | Inch Inches | Size | F | | D | B | A | L | |
| KF90L1212I | 20 | 3/4" | 12 | 3/4" | - | 38.1 | 58 | 54.7 | 116.5 | 14,48 |
| KF90L1216I | 20 | 3/4" | 12 | 1" | - | 44.5 | 62 | 54.7 | 116.5 | 17,30 |
| KF90L1612I | 25 | 1" | 16 | 3/4" | - | 38.1 | 60 | 74.6 | 146.7 | 22,23 |
| KF90L1616I | 25 | 1" | 16 | 1" | - | 44.5 | 68 | 70.6 | 146.7 | 16,59 |
| KF90L1620I | 25 | 1" | 16 | 1.1/4" | - | 50.8 | 70 | 74.6 | 146.7 | 21,43 |
| KF90L2020I | 32 | 1.1/4" | 20 | 1.1/4" | - | 50.8 | 87 | 87.7 | 176 | 24,34 |
| KF90L2024I | 32 | 1.1/4" | 20 | 1.1/2" | - | 60.3 | 88 | 87.7 | 176 | 29,90 |
| KF90L2424I | 40 | 1.1/2" | 24 | 1.1/2" | - | 60.3 | 102 | 99.5 | 193 | 34,20 |
| KF90L2432I | 40 | 1.1/2" | 24 | 2" | - | 71.4 | 118 | 99.5 | 193 | 58,23 |
| KF90L3232I | 50 | 2" | 32 | 2" | - | 71.4 | 120 | 144 | 242 | 46,00 |

**45° Flanschanschluss
SAE 3000 PSI / SFL-I Interlock**

**45° SAE flange SAE 3000 PSI /
SFL-I Interlock**

**Угловое 45° фланцевое
соединение SAE 3000 PSI /
SFL-I interlock**



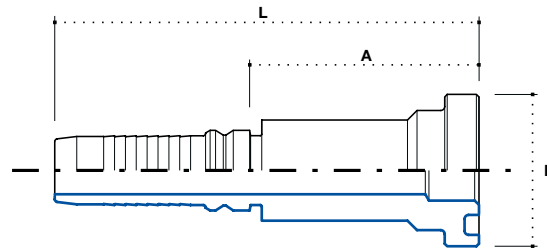
5

| Artikel Code | Schlauch / Hose | | | Flansch / Flange | | Abmessung / Dimension mm | | | | Euro |
|--------------|-----------------|-------------|------|------------------|---|--------------------------|----|-------|-------|-------|
| | DN | Inch Inches | Size | | | F | D | B | A | |
| KF45L1212I | 20 | 3/4" | 12 | 3/4" | - | 38.1 | 32 | 64.7 | 126.5 | 12,60 |
| KF45L1216I | 20 | 3/4" | 12 | 1" | - | 44.5 | 35 | 67.7 | 129.5 | 18,07 |
| KF45L1612I | 25 | 1" | 16 | 3/4" | - | 38.1 | 35 | 80.6 | 152.7 | 35,91 |
| KF45L1616I | 25 | 1" | 16 | 1" | - | 44.5 | 32 | 83.6 | 155.7 | 17,67 |
| KF45L1620I | 25 | 1" | 16 | 1.1/4" | - | 50.8 | 36 | 87.6 | 159.7 | 17,98 |
| KF45L2020I | 32 | 1.1/4" | 20 | 1.1/4" | - | 50.8 | 43 | 98.7 | 187 | 19,81 |
| KF45L2024I | 32 | 1.1/4" | 20 | 1.1/2" | - | 60.3 | 44 | 99.7 | 188 | 30,75 |
| KF45L2424I | 40 | 1.1/2" | 24 | 1.1/2" | - | 60.3 | 41 | 110.5 | 204 | 27,85 |
| KF45L2432I | 40 | 1.1/2" | 24 | 2" | - | 71.4 | 52 | 121.5 | 215 | 47,57 |
| KF45L3232I | 50 | 2" | 32 | 2" | - | 71.4 | 59 | 148 | 246 | 40,07 |

**Flanschanschluss
SAE 6000 PSI / SFS-I Interlock**

**Straight flange SAE 6000 PSI /
SFS-I Interlock**

**Фланцевое соединение SAE
6000 PSI / SFS -I interlock**

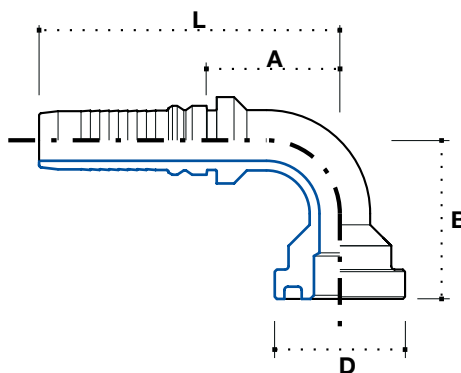


| Artikel Code | Flansch / Flange | | | Gewinde / Thread F | | Abmessung / Dimension mm | | | | Euro |
|--------------|------------------|-------------|------|-----------------------|---|--------------------------|------|------|-------|-------|
| | DN | Inch Inches | Size | | | - | D | A | L | |
| KFDP1212I | 20 | 3/4" | 12 | 3/4" | - | - | 41.3 | 50 | 112 | 9,55 |
| KFDP1216I | 20 | 3/4" | 12 | 1" | - | - | 47.6 | 61.7 | 123.5 | 13,72 |
| KFDP1612I | 25 | 1" | 16 | 3/4" | - | - | 41.3 | 61.6 | 133.7 | 33,17 |
| KFDP1616I | 25 | 1" | 16 | 1" | - | - | 47.6 | 63.6 | 135.7 | 12,51 |
| KFDP1620I | 25 | 1" | 16 | 1.1/4" | - | - | 54 | 68.6 | 140.7 | 14,39 |
| KFDP2020I | 32 | 1.1/4" | 20 | 1.1/4" | - | - | 54 | 68.7 | 157 | 16,05 |
| KFDP2024I | 32 | 1.1/4" | 20 | 1.1/2" | - | - | 63.5 | 76.7 | 165 | 23,40 |
| KFDP2424I | 40 | 1.1/2" | 24 | 1.1/2" | - | - | 63.5 | 76.5 | 170 | 22,15 |
| KFDP3232I | 50 | 2" | 32 | 2" | - | - | 79.4 | 73 | 171 | 35,20 |

**90° Flanschanschluss
SAE 6000 PSI / SFS-I Interlock**

**90° SAE flange SAE 6000 PSI /
SFS-I Interlock**

**Угловое 90° фланцевое
соединение SAE 6000 PSI / SFS
-I interlock**



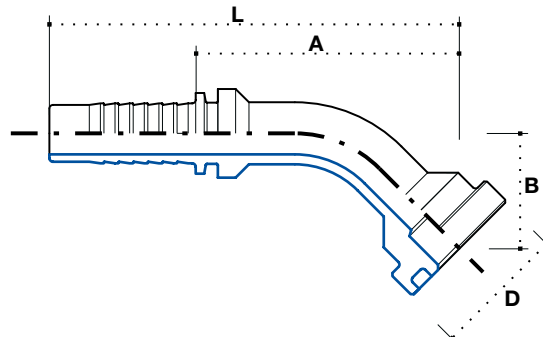
5

| Artikel Code | Schlauch / Hose | | | Flansch / Flange | | Abmessung / Dimension mm | | | | Euro |
|--------------|-----------------|-------------|------|------------------|---|--------------------------|-----|------|-------|-------|
| | DN | Inch Inches | Size | | | F | D | B | A | |
| KF90P1212I | 20 | 3/4" | 12 | 3/4" | - | 41.3 | 62 | 54.7 | 116.5 | 14,25 |
| KF90P1216I | 20 | 3/4" | 12 | 1" | - | 47.6 | 67 | 54.7 | 116.5 | 16,45 |
| KF90P1612I | 25 | 1" | 16 | 3/4" | - | 41.3 | 64 | 74.6 | 146.7 | 35,45 |
| KF90P1616I | 25 | 1" | 16 | 1" | - | 47.6 | 69 | 74.6 | 146.7 | 17,67 |
| KF90P1620I | 25 | 1" | 16 | 1.1/4" | - | 54 | 76 | 74.6 | 146.7 | 22,77 |
| KF90P2020I | 32 | 1.1/4" | 20 | 1.1/4" | - | 54 | 93 | 87.7 | 176 | 22,37 |
| KF90P2024I | 32 | 1.1/4" | 20 | 1.1/2" | - | 63.5 | 97 | 87.7 | 176 | 39,50 |
| KF90P2424I | 40 | 1.1/2" | 24 | 1.1/2" | - | 63.5 | 111 | 99.5 | 193 | 36,00 |
| KF90P3232I | 50 | 2" | 32 | 2" | - | 79.4 | 128 | 144 | 242 | 61,82 |

**45° Flanschanschluss
SAE 6000 PSI / SFS-I Interlock**

**45° SAE flange SAE 6000 PSI /
SFS-I Interlock**

**Угловое 45° фланцевое
соединение SAE 6000 PSI / SFS
-I interlock**

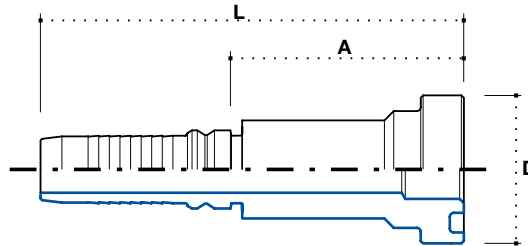


| Artikel Code | Flansch / Flange | | | Gewinde / Thread F | | Abmessung / Dimension mm | | | | Euro |
|--------------|------------------|-------------|------|-----------------------|---|--------------------------|----|-------|-------|-------|
| | DN | Inch Inches | Size | | | D | B | A | L | |
| KF45P1212I | 20 | 3/4" | 12 | 3/4" | - | 41.3 | 35 | 67.7 | 129.5 | 12,20 |
| KF45P1216I | 20 | 3/4" | 12 | 1" | - | 47.6 | 39 | 71.7 | 133.5 | 18,24 |
| KF45P1612I | 25 | 1" | 16 | 3/4" | - | 41.3 | 32 | 83.6 | 155.7 | 35,45 |
| KF45P1616I | 25 | 1" | 16 | 1" | - | 47.6 | 35 | 86.6 | 158.7 | 15,82 |
| KF45P1620I | 25 | 1" | 16 | 1.1/4" | - | 54 | 40 | 91.6 | 163.7 | 20,98 |
| KF45P2020I | 32 | 1.1/4" | 20 | 1.1/4" | - | 54 | 47 | 102.7 | 191 | 21,83 |
| KF45P2024I | 32 | 1.1/4" | 20 | 1.1/2" | - | 63.5 | 50 | 105.7 | 194 | 30,67 |
| KF45P2424I | 40 | 1.1/2" | 24 | 1.1/2" | - | 63.5 | 47 | 116.5 | 210 | 31,29 |
| KF45P3232I | 50 | 2" | 32 | 2" | - | 79.4 | 64 | 153 | 251 | 49,31 |

**Flanschanschluss
SUPERCAT - SAE 9000 PSI /
SFS-I Interlock**

**Straight SAE flange SUPERCAT
- SAE 9000 PSI / SFS-I Interlock**

**Фланцевое соединение
SUPERCAT SAE 9000PSI /
SFS-I interlock**

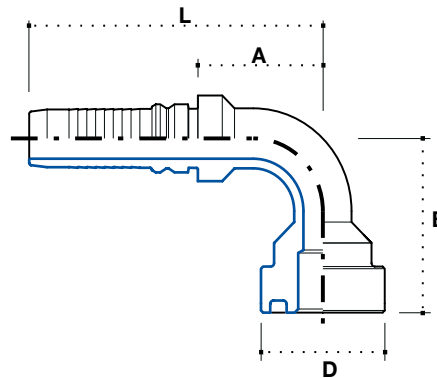


| Artikel Code | Schlauch / Hose | | | Flansch / Flange F | Abmessung / Dimension mm | | | | Euro | |
|--------------|-----------------|-------------|------|-----------------------|--------------------------|---|------|------|-------|-------|
| | DN | Inch Inches | Size | | - | B | A | L | | |
| KFDS1212I | 20 | 3/4" | 12 | 3/4" | - | - | 41.3 | 55.7 | 117.5 | 9,55 |
| KFDS1216I | 20 | 3/4" | 12 | 1" | - | - | 47.6 | 67.7 | 129.5 | 13,45 |
| KFDS1616I | 25 | 1" | 16 | 1" | - | - | 47.6 | 69.6 | 141.7 | 12,51 |
| KFDS1620I | 25 | 1" | 16 | 1.1/4" | - | - | 54 | 72.6 | 144.7 | 14,40 |
| KFDS2020I | 32 | 1.1/4" | 20 | 1.1/4" | - | - | 54 | 69.7 | 158 | 16,70 |
| KFDS2024I | 32 | 1.1/4" | 20 | 1.1/2" | - | - | 63.5 | 78.7 | 167 | 23,34 |
| KFDS2424I | 40 | 1.1/2" | 24 | 1.1/2" | - | - | 63.5 | 78.5 | 172 | 22,15 |

**90° Flanschanschluss
SUPERCAT - SAE 9000 PSI /
SFS-I Interlock**

**90° Swept elbow SUPERCAT
- SAE 9000 PSI / SFS-I Interlock**

**Угловое 90° фланцевое
соединение SUPERCAT SAE
9000 PSI / SFS-I interlock**

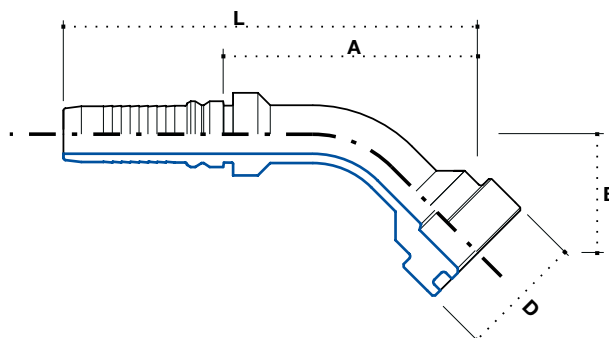


| Artikel Code | Flansch / Flange | | | Gewinde / Thread F | | Abmessung / Dimension mm | | | | Euro |
|--------------|------------------|-------------|------|-----------------------|---|--------------------------|-----|------|-------|-------|
| | DN | Inch Inches | Size | | | D | B | A | L | |
| KF90S1212I | 20 | 3/4" | 12 | 3/4" | - | 41.3 | 67 | 54.7 | 116.5 | 14,22 |
| KF90S1216I | 20 | 3/4" | 12 | 1" | - | 47.6 | 73 | 54.7 | 116.5 | 16,39 |
| KF90S1616I | 25 | 1" | 16 | 1" | - | 47.6 | 75 | 74.6 | 146.7 | 17,64 |
| KF90S1620I | 25 | 1" | 16 | 1.1/4" | - | 54 | 80 | 74.6 | 146.7 | 22,77 |
| KF90S2020I | 32 | 1.1/4" | 20 | 1.1/4" | - | 54 | 97 | 87.7 | 176 | 22,37 |
| KF90S2024I | 32 | 1.1/4" | 20 | 1.1/2" | - | 63.5 | 99 | 87.7 | 176 | 39,50 |
| KF90S2424I | 40 | 1.1/2" | 24 | 1.1/2" | - | 63.5 | 113 | 99.5 | 193 | 36,00 |

**45° Flanschanschluss
SUPERCAT - SAE 9000 PSI /
SFS-I Interlock**

**45° Swept elbow SUPERCAT
- SAE 9000 PSI / SFS-I Interlock**

**Угловое 45° фланцевое
соединение SUPERCAT SAE
9000 PSI / SFS-I interlock**



5

| Artikel Code | Schlauch / Hose | | | Flansch / Flange F | | Abmessung / Dimension mm | | | | Euro |
|--------------|-----------------|-------------|------|-----------------------|---|--------------------------|----|-------|-------|-------|
| | DN | Inch Inches | Size | | | D | B | A | L | |
| KF45S1212I | 20 | 3/4" | 12 | 3/4" | - | 41.3 | 39 | 71.7 | 133.5 | 12,20 |
| KF45S1216I | 20 | 3/4" | 12 | 1" | - | 47.6 | 43 | 75.7 | 137.5 | 18,24 |
| KF45S1616I | 25 | 1" | 16 | 1" | - | 47.6 | 40 | 91.6 | 163.7 | 15,82 |
| KF45S1620I | 25 | 1" | 16 | 1.1/4" | - | 54 | 43 | 94.6 | 166.7 | 20,98 |
| KF45S2020I | 32 | 1.1/4" | 20 | 1.1/4" | - | 54 | 50 | 105.7 | 194 | 21,83 |
| KF45S2024I | 32 | 1.1/4" | 20 | 1.1/2" | - | 63.5 | 51 | 106.7 | 195 | 30,64 |
| KF45S2424I | 40 | 1.1/2" | 24 | 1.1/2" | - | 63.5 | 49 | 118.5 | 212 | 31,29 |