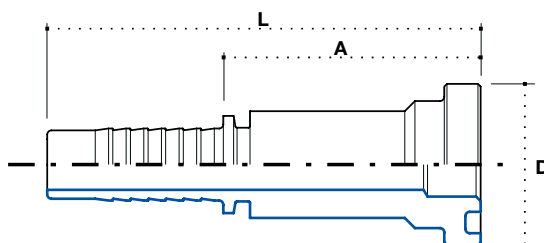


**Flanschanschluss SAE 3000 PSI  
- einteilig**

**Straight flange one piece SAE  
3000 PSI**

**Фланцевое соединение SAE  
3000 PSI**



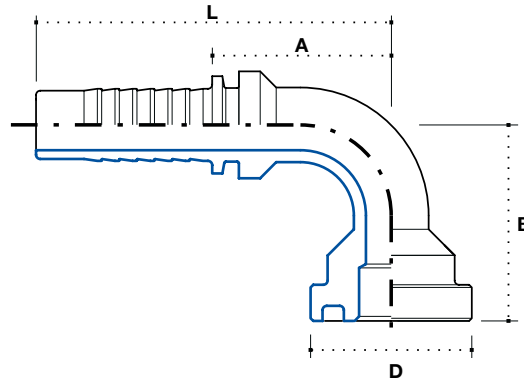
3

Artikel Code	Schlauch / Hose			Flansch / Flange		Abmessung / Dimension mm				Euro
	DN	Inch Inches	Size			F	B	D	A	
FDL0808I	12	1/2"	08	1/2"	-	-	30.2	49	82	5,02
FDL0810I	12	1/2"	08	5/8"	-	-	34	48	81	*
FDL0812I	12	1/2"	08	3/4"	-	-	38.1	52	84	8,15
FDL1008I	16	5/8"	10	1/2"	-	-	30.2	49	85	13,14
FDL1010I	16	5/8"	10	5/8"	-	-	34	49	85	14,33
FDL1012I	16	5/8"	10	3/4"	-	-	38.1	48	84	13,00
FDL1208I	20	3/4"	12	1/2"	-	-	30.2	47	88	12,51
FDL1212I	20	3/4"	12	3/4"	-	-	38.1	47	88	6,27
FDL1216I	20	3/4"	12	1"	-	-	44.5	50	91	8,07
FDL1612I	25	1"	16	3/4"	-	-	38.1	50	91	14,71
FDL1616I	25	1"	16	1"	-	-	44.5	50	105	8,84
FDL1620I	25	1"	16	1.1/4"	-	-	50.8	67	120	12,06
FDL2016I	32	1.1/4"	20	1"	-	-	44.5	57	117	27,39
FDL2020I	32	1.1/4"	20	1.1/4"	-	-	50.8	65	125	12,51
FDL2024I	32	1.1/4"	20	1.1/2"	-	-	60.3	70	130	17,98
FDL2424I	40	1.1/2"	24	1.1/2"	-	-	60.3	70	141	19,95
FDL2432I	40	1.1/2"	24	2"	-	-	71.4	72	143	23,94
FDL3232I	50	2"	32	2"	-	-	71.4	73	153	28,16

**90° Flanschanschluss SAE  
3000 PSI - einteilig**

**90° Flange one piece SAE  
3000 PSI**

**Угловое 90° фланцевое  
соединение SAE 3000 PSI**

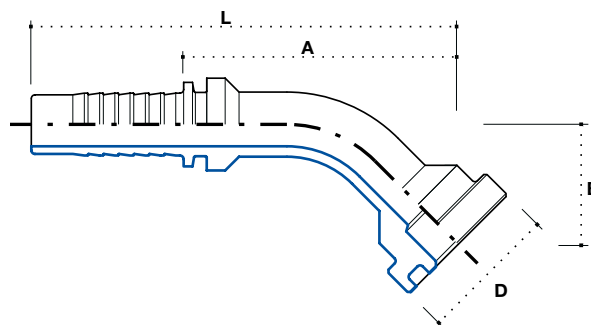


Artikel Code	Flansch / Flange			Gewinde / Thread F		Abmessung / Dimension mm				Euro
	DN	Inch Inches	Size			D	B	A	L	
F90L0808I	12	1/2"	08	1/2"	-	30.2	43	39	72	8,61
F90L0812I	12	1/2"	08	3/4"	-	38.1	50	39	72	10,94
F90L1008I	16	5/8"	10	1/2"	-	30.2	49	49	85	18,78
F90L1012I	16	5/8"	10	3/4"	-	38.1	55	49	85	15,42
F90L1208I	20	3/4"	12	1/2"	-	30.2	52	57	98	17,21
F90L1212I	20	3/4"	12	3/4"	-	38.1	58	57	98	9,41
F90L1216I	25	1"	16	1"	-	44.5	62	57	98	10,89
F90L1612I	25	1"	16	3/4"	-	38.1	60	77	132	21,92
F90L1616I	25	1"	16	1"	-	44.5	64	77	132	12,26
F90L1620I	25	1"	16	1.1/4"	-	50.8	70	77	132	17,36
F90L2016I	32	1.1/4"	16	1"	-	44.5	82	89	150	35,20
F90L2020I	32	1.1/4"	20	1.1/4"	-	50.8	87	89	150	17,98
F90L2024I	32	1.1/4"	20	1.1/2"	-	60.3	88	89	150	27,53
F90L2424I	40	1.1/2"	24	1.1/2"	-	60.3	102	101	172	32,86
F90L2432I	40	1.1/2"	24	2"	-	71.4	118	101	172	48,51
F90L3232I	50	2"	32	2"	-	71.4	120	144	224	52,04

**45° Flanschanschluss SAE  
3000 PSI - einteilig**

**45° Flange one piece SAE  
3000 PSI**

**Угловое 45° фланцевое  
соединение SAE 3000 PSI**



Artikel Code	Schlauch / Hose			Flansch / Flange		Abmessung / Dimension mm				Euro
	DN	Inch Inches	Size			F	D	B	A	
F45L0808I	12	1/2"	08	1/2"	-	30.2	23	63	96	8,61
F45L0812I	12	1/2"	08	3/4"	-	38.1	28	68	101	10,94
F45L1008I	16	5/8"	10	1/2"	-	30.2	26	59	95	18,78
F45L1012I	16	5/8"	10	3/4"	-	38.1	30	63	99	15,42
F45L1208I	20	3/4"	12	1/2"	-	30.2	28	63	104	17,21
F45L1212I	20	3/4"	12	3/4"	-	38.1	32	67	108	9,41
F45L1216I	25	1"	16	1"	-	44.5	35	70	111	10,89
F45L1612I	25	1"	16	3/4"	-	38.1	35	83	138	21,92
F45L1616I	25	1"	16	1"	-	44.5	32	86	141	12,51
F45L1620I	25	1"	16	1.1/4"	-	50.8	36	90	145	17,30
F45L2016I	32	1.1/4"	16	1"	-	44.5	36	96	157	35,20
F45L2020I	32	1.1/4"	20	1.1/4"	-	50.8	43	100	161	17,98
F45L2024I	32	1.1/4"	20	1.1/2"	-	60.3	44	101	162	27,53
F45L2424I	40	1.1/2"	24	1.1/2"	-	60.3	41	112	183	32,86
F45L2432I	40	1.1/2"	24	2"	-	71.4	52	123	194	48,51
F45L3232I	50	2"	32	2"	-	71.4	59	148	228	52,04