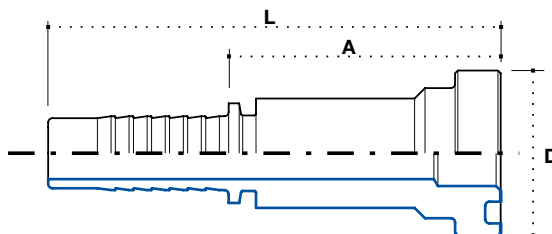


Flanschanschluss SUPERCAT - SAE 9000 PSI

Straight flange SUPERCAT - SAE 900 PSI

Фланцевое соединение SUPERCAT - SAE 9000 PSI

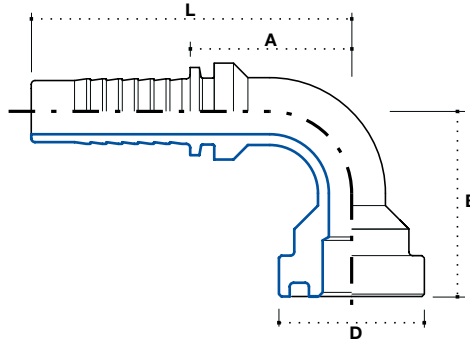


Artikel Code	Schlauch / Hose			Flansch / Flange		Abmessung / Dimension mm				Euro
	DN	Inch Inches	Size			F	-	D	A	
FDS1212I	20	3/4"	12	3/4"	-	-	41.3	58	99	12,51
FDS1216I	20	3/4"	12	1"	-	-	47.6	70	111	18,78
FDS1616I	25	1"	16	1"	-	-	47.6	72	127	15,19
FDS1620I	25	1"	16	1.1/4"	-	-	54	75	130	18,30
FDS2020I	32	1.1/4"	20	1.1/4"	-	-	54	71	131	18,78
FDS2024I	32	1.1/4"	20	1.1/2"	-	-	63.5	80	141	31,61
FDS2424I	40	1.1/2"	24	1.1/2"	-	-	63.5	80	151	29,73

**90° Flanschanschluss
SUPERCAT - SAE 9000 PSI**

**90° Swept elbow SUPERCAT
- SAE 9000 PSI**

**Угловое 90° фланцевое
соединение SUPERCAT
- SAE 9000 PSI**

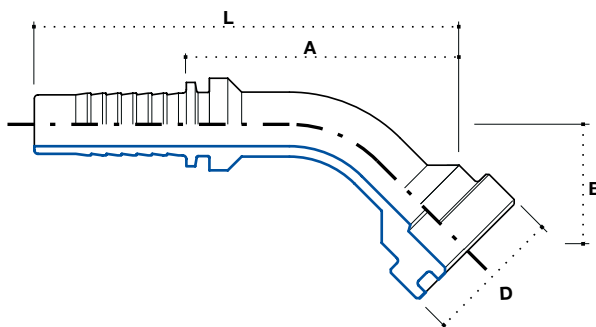


Artikel Code	Flansch / Flange			Gewinde / Thread F		Abmessung / Dimension mm				Euro
	DN	Inch Inches	Size			D	B	A	L	
F90S1212I	20	3/4"	12	3/4"	-	41.3	67	57	98	16,67
F90S1216I	20	3/4"	12	1"	-	47.6	73	57	98	23,00
F90S1616I	25	1"	16	1"	-	47.6	75	77	132	21,60
F90S1620I	25	1"	16	1.1/4"	-	54	80	77	132	29,10
F90S2020I	32	1.1/4"	20	1.1/4"	-	54	97	89	150	29,41
F90S2024I	32	1.1/4"	20	1.1/2"	-	63.5	99	89	150	45,37
F90S2424I	40	1.1/2"	24	1.1/2"	-	63.5	113	101	172	45,37

**45° Flanschanschluss
SUPERCAT - SAE 9000 PSI**

**45° Swept elbow SUPERCAT
- SAE 9000 PSI**

**Угловое 45° фланцевое
соединение SUPERCAT
- SAE 9000 PSI**



3

Artikel Code	Schlauch / Hose			Flansch / Flange		Abmessung / Dimension mm				Euro
	DN	Inch Inches	Size			F	D	B	A	
F45S1212I	20	3/4"	12	3/4"	-	41.3	39	74	115	16,67
F45S1216I	20	3/4"	12	1"	-	47.6	43	78	119	23,00
F45S1616I	25	1"	16	1"	-	47.6	40	94	149	21,60
F45S1620I	25	1"	16	1.1/4"	-	54	43	97	152	29,10
F45S2020I	32	1.1/4"	20	1.1/4"	-	54	50	107	168	29,41
F45S2024I	32	1.1/4"	20	1.1/2"	-	63.5	51	108	169	45,37
F45S2424I	40	1.1/2"	24	1.1/2"	-	63.5	49	120	191	45,37