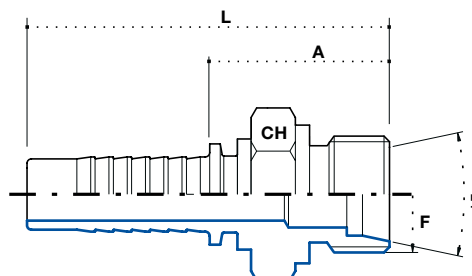


### AGF 24° Innenkonus (französische Serie)

Metric male 24° french type

AGF ниппель, внутренний конус 24°, французский тип

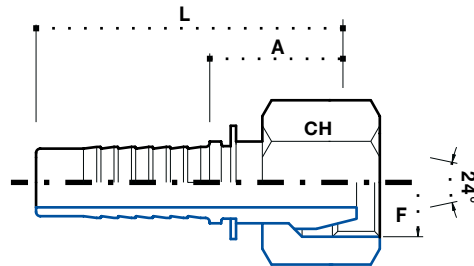


Artikel Code	Schlauch / Hose			Gewinde / Thread F	Tubo mm	Abmessung / Dimension mm				Euro
	DN	Inch Inches	Size			-	CH	A	L	
ME0413F	6	1/4"	04	M20x1.5	13	-	22	26.7	55.2	26,73
ME0513F	8	5/16"	05	M20x1.5	13	-	22	26.7	55.2	26,73
ME0613F	10	3/8"	06	M20x1.5	13	-	22	26.7	57.2	5,10
ME0617F	10	3/8"	06	M24x1.5	17	-	27	30.2	60.7	27,39
ME0817F	12	1/2"	08	M24x1.5	17	-	27	30.7	63.7	4,30
ME0821F	12	1/2"	08	M30x1.5	21	-	32	31.2	64.2	28,42
ME1021F	16	5/8"	10	M30x1.5	21	-	32	31.2	67.2	5,87
ME1221F	20	3/4"	12	M30x1.5	21	-	32	31.7	73.2	23,48
ME1227F	20	3/4"	12	M36x1.5	27	-	38	31.7	73.2	25,28
ME1633F	25	1"	16	M45x1.5	33	-	46	37.2	92.2	30,21
ME2033F	32	1.1/4"	20	M45x1.5	33	-	46	38.2	99.2	33,57

**DKM mit 24° Konus  
(französische Serie)**

Metric female 24° french type

**DKM ниппель, конус 24°,  
французкий тип**

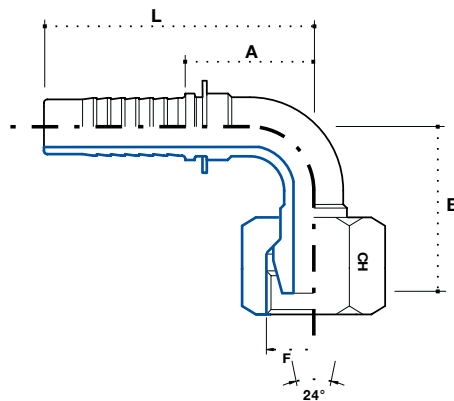


Artikel Code	Schlauch / Hose			Gewinde / Thread F		Abmessung / Dimension mm				Euro
	DN	Inch Inches	Size			-	CH	A	L	
FE0413F	6	1/4"	04	M20 x 1.5	-	-	24	23.5	51.5	3,08
FE0513F	8	5/16"	05	M20 x 1.5	-	-	24	23.5	51.5	1,54
FE0613F	10	3/8"	06	M20 x 1.5	-	-	24	23.5	53.5	1,43
FE0617F	10	3/8"	06	M24 x 1.5	-	-	30	27	57	2,99
FE0817F	12	1/2"	08	M24 x 1.5	-	-	30	27.5	60.5	2,42
FE0821F	12	1/2"	08	M30 x 1.5	-	-	36	31	64	11,29
FE1021F	16	5/8"	10	M30 x 1.5	-	-	36	31	67	4,76
FE1221F	20	3/4"	12	M30 x 1.5	-	-	36	31.5	72.5	12,20
FE1227F	20	3/4"	12	M36 x 1.5	-	-	41	34	75	12,31
FE1633F	25	1"	16	M45 x 1.5	-	-	50	34	89	17,98
FE2033F	32	1.1/4"	20	M45 x 1.5	-	-	50	34	95	28,99

### DKF 90° Bogen (französische Serie)

90° metric swept elbow 24°  
french type

DKF угловой ниппель 90°,  
конус 24°, французский тип



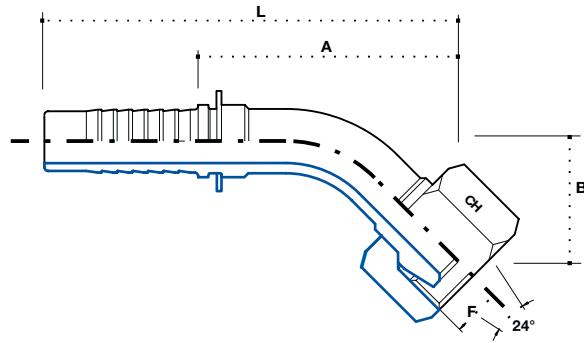
3

Artikel Code	Schlauch / Hose			Gewinde / Thread F		Abmessung / Dimension mm				Euro
	DN	Inch Inches	Size			CH	B	A	L	
F90E0413F	6	1/4"	04	M20x1.5	-	24	32.5	27	55	4,20
F90E0513F	8	5/16"	05	M20x1.5	-	24	39	29	57	3,19
F90E0613F	10	3/8"	06	M20x1.5	-	24	39.5	35.5	65	3,19
F90E0617F	10	3/8"	06	M24x1.5	-	30	48	36	69	6,73
F90E0817F	12	1/2"	08	M24x1.5	-	30	48	39.5	72	3,71
F90E0821F	12	1/2"	08	M30x1.5	-	36	61	45.5	81	13,39
F90E1021F	16	5/8"	10	M30x1.5	-	36	61	48.5	84	6,93
F90E1221F	20	3/4"	12	M30x1.5	-	36	64	56.5	97	8,29
F90E1227F	20	3/4"	12	M36x1.5	-	41	64	56.5	97	8,01
F90E1633F	25	1"	16	M45x1.5	-	50	91	86	146	43,63
F90E2033F	32	1.1/4"	20	M45x1.5	-	50	91	92	152	59,37

**DKF 45° Bogen  
(französische Serie)**

45° metric swept elbow 24°  
french type

DKF угловой ниппель 45°,  
конус 24°, французкий тип



Artikel Code	Schlauch / Hose			Gewinde / Thread F	Abmessung / Dimension mm				Euro	
	DN	Inch Inches	Size		CH	B	A	L		
F45E0413F	6	1/4"	04	M20 x 1.5	-	24	18.5	50	77.5	4,59
F45E0513F	8	5/16"	05	M20 x 1.5	-	24	21	52	79	3,19
F45E0613F	10	3/8"	06	M20 x 1.5	-	24	18.5	58.5	88	3,19
F45E0617F	10	3/8"	06	M24 x 1.5	-	30	24	65.5	98	7,41
F45E0817F	12	1/2"	08	M24 x 1.5	-	30	24	68.5	101	4,45
F45E0821F	12	1/2"	08	M30 x 1.5	-	36	29	68	102	18,04
F45E1021F	16	5/8"	10	M30 x 1.5	-	36	29	68	103.5	6,93
F45E1221F	20	3/4"	12	M30 x 1.5	-	36	30	69	108	9,12
F45E1227F	20	3/4"	12	M36 x 1.5	-	41	31	73	113	9,43
F45E1633F	25	1"	16	M45 x 1.5	-	50	36	101	161	47,99
F45E2033F	32	1.1/4"	20	M45 x 1.5	-	50	38	107	167	65,47