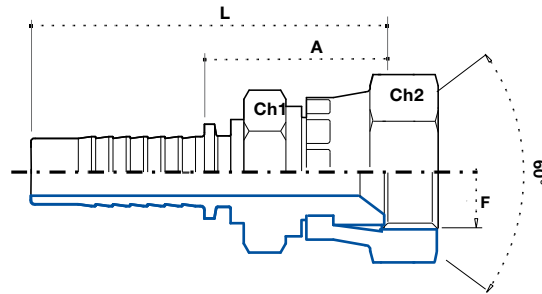


DK „TOYOTA“ 60° Konus

**TOYOTA BSP straight female
60°**

**DK „TOYOTA“ ниппель, конус
60°**

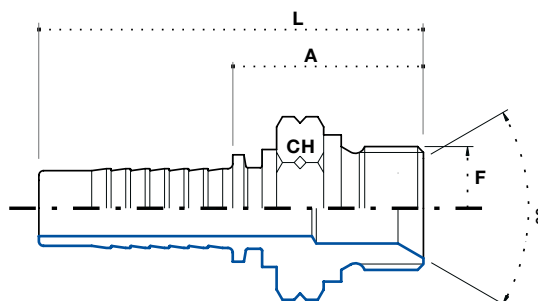


Artikel Code	Schlauch / Hose			Gewinde / Thread F	Abmessung / Dimension mm				Euro
	DN	Inch Inches	Size		CH ₁	CH ₂	A	L	
FDT0404	6	1/4"	04	1/4" - 19	-				3,14
FDT0606	10	3/8"	06	3/8" - 19	-				4,19
FDT0808	12	1/2"	08	1/2" - 14	-				5,90
FDT1212	20	3/4"	12	3/4" - 14	-				10,15
FDT1616	25	1"	16	1" - 11	-				19,38
FDT2020	32	1.1/4"	20	1.1/4" - 11	-				37,28
FDT2424	40	1.1/2"	24	1.1/2" - 11	-				46,28

AGM 60° Innenkonus

Metric male 60°

AGM ниппель, метрический,
конус 60°

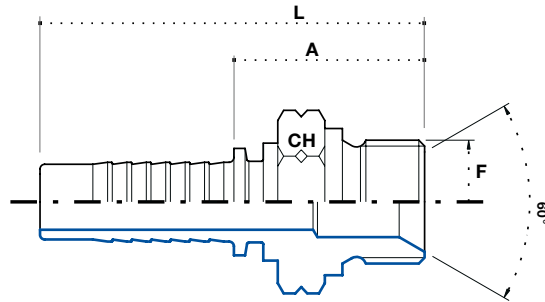


Artikel Code	Schlauch / Hose			Gewinde / Thread		Abmessung / Dimension mm				Euro
	DN	Inch Inches	Size			F	-	CH	A	
MM0310	5	3/16"	03	M10 x 1	-	-	15	21	45	1,74
MM0312	5	3/16"	03	M12 x 1.5	-	-	17	24.5	49	1,94
MM0410	6	1/4"	04	M10 x 1	-	-	15	21	49	1,22
MM0412	6	1/4"	04	M12 x 1.5	-	-	17	25.5	54	1,57
MM0414	6	1/4"	04	M14 x 1.5	-	-	19	27	55	1,48
MM0416	6	1/4"	04	M16 x 1.5	-	-	22	29	57	1,88
MM0418	6	1/4"	04	M18 x 1.5	-	-	24	29	57	0,91
MM0514	8	5/16"	05	M14 x 1.5	-	-	19	27	55	1,28
MM0516	8	5/16"	05	M16 x 1.5	-	-	22	29	57	1,82
MM0518	8	5/16"	05	M18 x 1.5	-	-	24	29	57	2,11
MM0614	10	3/8"	06	M14 x 1.5	-	-	19	27	57	2,20
MM0616	10	3/8"	06	M16 x 1.5	-	-	22	29	59	1,88
MM0618	10	3/8"	06	M18 x 1.5	-	-	24	29	59	1,88
MM0620	10	3/8"	06	M20 x 1.5	-	-	27	32	62	2,28
MM0622	10	3/8"	06	M22 x 1.5	-	-	27	32	62	2,20
MM0818	12	1/2"	08	M18 x 1.5	-	-	24	29	62	2,42
MM0820	12	1/2"	08	M20 x 1.5	-	-	27	33	66	1,32
MM0822	12	1/2"	08	M22 x 1.5	-	-	27	33	66	2,37
MM0824	12	1/2"	08	M24 x 1.5	-	-	30	36	69	6,27
MM0826	12	1/2"	08	M26 x 1.5	-	-	32	36	69	7,67
MM1026	16	5/8"	10	M26 x 1.5	-	-	32	36	72	7,67
MM1226	20	3/4"	12	M26 x 1.5	-	-	32	37	78	6,27
MM1230	20	3/4"	12	M30 x 1.5	-	-	34	36	77	7,84

AGM 60° Innenkonus

Metric male 60°

AGM ниппель, метрический,
внутренний конус 60°

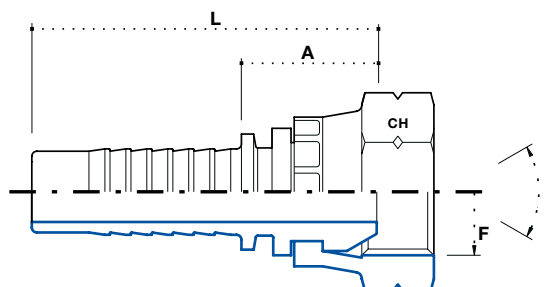


Artikel Code	Schlauch / Hose			Gewinde / Thread	F	Abmessung / Dimension mm				Euro
	DN	Inch Inches	Size			-	CH	A	L	
MM1638	25	1"	16	M38 x 1.5	-	-	46	37	92	17,21
MM2045	32	1.1/4"	20	M45 x 1.5	-	-	-	-	-	32,86
MM2452	40	1.1/2"	24	M52 x 1.5	-	-	-	-	-	36,97

DKM 60° Konus

Metric female SV 60°

DKM ниппель, конус 60°, метрический



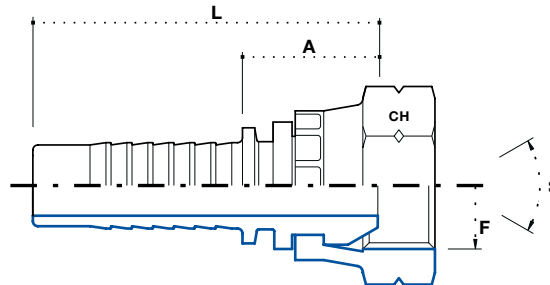
3

Artikel Code	Schlauch / Hose			Gewinde / Thread	F	Abmessung / Dimension mm				Euro
	DN	Inch Inches	Size			-	CH	A	L	
FDM0310	5	3/16"	03	M10 x 1	-	-	15	18	43	1,54
FDM0312	5	3/16"	03	M12 x 1.5	-	-	17	18	43	1,45
FDM0410	6	1/4"	04	M10 x 1	-	-	15	18	46	1,40
FDM0412	6	1/4"	04	M12 x 1.5	-	-	17	18	46	1,40
FDM0414	6	1/4"	04	M14 x 1.5	-	-	19	18	46	0,94
FDM0416	6	1/4"	04	M16 x 1.5	-	-	22	19	47	0,83
FDM0418	6	1/4"	04	M18 x 1.5	-	-	24	19	47	1,25
FDM0514	8	5/16"	05	M14 x 1.5	-	-	19	18	46	1,31
FDM0516	8	5/16"	05	M16 x 1.5	-	-	22	19	47	0,84
FDM0518	8	5/16"	05	M18 x 1.5	-	-	24	19	47	1,34
FDM0614	10	3/8"	06	M14 x 1.5	-	-	19	19	49	1,63
FDM0616	10	3/8"	06	M16 x 1.5	-	-	22	20	50	1,25
FDM0618	10	3/8"	06	M18 x 1.5	-	-	24	20	50	1,20
FDM0620	10	3/8"	06	M20 x 1.5	-	-	27	21	51	1,82
FDM0622	10	3/8"	06	M22 x 1.5	-	-	27	21	51	1,80
FDM0818	12	1/2"	08	M18 x 1.5	-	-	24	20	53	1,97
FDM0820	12	1/2"	08	M20 x 1.5	-	-	27	22	55	1,74
FDM0822	12	1/2"	08	M22 x 1.5	-	-	27	22	55	1,17
FDM0824	12	1/2"	08	M24 x 1.5	-	-	30	23	56	2,74
FDM0826	12	1/2"	08	M26 x 1.5	-	-	32	24	57	3,45
FDM1026	16	5/8"	10	M26 x 1.5	-	-	32	24	60	2,82
FDM1226	20	3/4"	12	M26 x 1.5	-	-	32	25	66	2,91
FDM1230	20	3/4"	12	M30 x 1.5	-	-	34	26	67	5,26

DKM 60° Konus

Metric female SV 60°

DKM ниппель, конус 60°, метрический

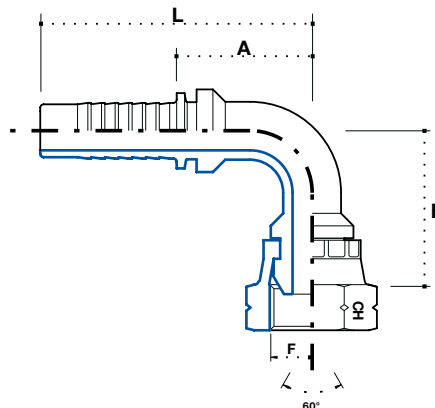


Artikel Code	Schlauch / Hose			Gewinde / Thread	F	Abmessung / Dimension mm				Euro
	DN	Inch Inches	Size			-	CH	A	L	
FDM1638	25	1"	16	M38 x 1.5	-	-	46	37	92	10,49
FDM2045	32	1.1/4"	20	M45 x 1.5	-	-	-	-	-	25,82
FDM2452	40	1.1/2"	24	M52 x 1.5	-	-	-	-	-	43,04

DKM 90° Bogen 60° Konus

Metric female 90° swept elbow

DKM угловой ниппель 90°,
конус 60°, метрический

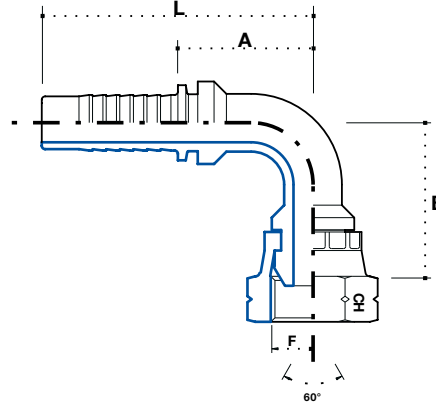


Artikel Code	Schlauch / Hose			Gewinde / Thread		Abmessung / Dimension mm				Euro
	DN	Inch Inches	Size			F	CH	B	A	
F90M0310	5	3/16"	03	M10 x 1	-	15	29	23	47.5	2,65
F90M0312	5	3/16"	03	M12 x 1.5	-	17	29	23	47.5	2,68
F90M0410	6	1/4"	04	M10 x 1	-	15	29	23	51	2,42
F90M0412	6	1/4"	04	M12 x 1.5	-	17	29	23	51	2,28
F90M0414	6	1/4"	04	M14 x 1.5	-	19	29	23	51	1,63
F90M0416	6	1/4"	04	M16 x 1.5	-	22	32	23	51	2,28
F90M0418	6	1/4"	04	M18 x 1.5	-	24	32	23	51	2,28
F90M0514	8	5/16"	05	M14 x 1.5	-	19	33.5	31.5	59.5	1,82
F90M0516	8	5/16"	05	M16 x 1.5	-	22	35.5	31.5	59.5	2,20
F90M0518	8	5/16"	05	M18 x 1.5	-	24	35.5	31.5	59.5	2,28
F90M0614	10	3/8"	06	M14 x 1.5	-	19	37	33	63	3,22
F90M0616	10	3/8"	06	M16 x 1.5	-	22	38	33	63	2,11
F90M0618	10	3/8"	06	M18 x 1.5	-	24	38	33	63	2,20
F90M0620	10	3/8"	06	M20 x 1.5	-	27	42	33	63	2,96
F90M0622	10	3/8"	06	M22 x 1.5	-	27	42	33	63	2,99
F90M0818	12	1/2"	08	M18 x 1.5	-	24	43	39	72	3,91
F90M0820	12	1/2"	08	M20 x 1.5	-	27	45	39	72	3,31
F90M0822	12	1/2"	08	M22 x 1.5	-	27	45	39	72	2,35
F90M0824	12	1/2"	08	M24 x 1.5	-	30	47	39	72	4,70
F90M0826	12	1/2"	08	M26 x 1.5	-	32	51	39	72	5,36
F90M1026	16	5/8"	10	M26 x 1.5	-	32	56	49	85	5,36
F90M1226	20	3/4"	12	M26 x 1.5	-	32	59	53.5	94.5	5,24
F90M1230	20	3/4"	12	M30 x 1.5	-	34	63	53.5	94.5	9,23

DKM 90° Bogen 60° Konus

Metric female 90° swept elbow

DKM угловой ниппель 90°, конус 60°, метрический

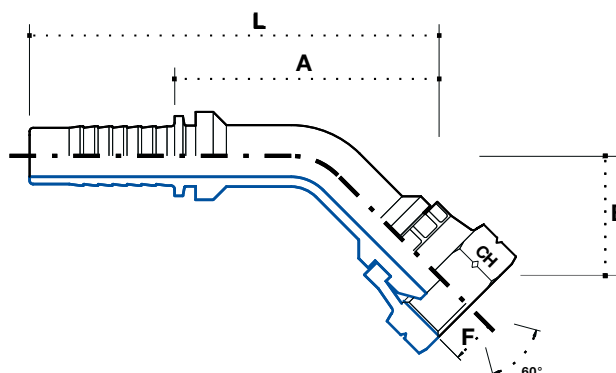


Artikel Code	Schlauch / Hose			Gewinde / Thread F		Abmessung / Dimension mm				Euro
	DN	Inch Inches	Size			CH	B	A	L	
F90M1638	25	1"	16	M38 x 1.5	-	46	72	73	128	17,61
F90M2045	32	1.1/4"	20	M45 x 1.5	-	-	-	-	-	46,17
F90M2452	40	1.1/2"	24	M52 x 1.5	-	-	-	-	-	73,53

DKM 45° Bogen 60° Konus

Metric female 45° swept elbow

DKM угловой ниппель 45°,
конус 60°, метрический

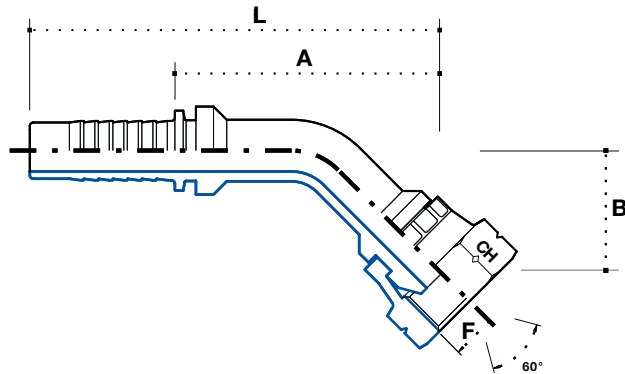


Artikel Code	Schlauch / Hose			Gewinde / Thread F		Abmessung / Dimension mm				Euro
	DN	Inch Inches	Size			CH	B	A	L	
F45M0310	5	3/16"	03	M10 x 1	-	15	17	40	65	2,94
F45M0312	5	3/16"	03	M12 x 1.5	-	17	17	40	65	2,94
F45M0410	6	1/4"	04	M10 x 1	-	15	17	40	68	2,68
F45M0412	6	1/4"	04	M12 x 1.5	-	17	17	40	68	2,51
F45M0414	6	1/4"	04	M14 x 1.5	-	19	17	40	68	1,80
F45M0416	6	1/4"	04	M16 x 1.5	-	22	20	43	71	2,51
F45M0418	6	1/4"	04	M18 x 1.5	-	24	20	43	71	2,51
F45M0514	8	5/16"	05	M14 x 1.5	-	19	17	40	68	2,37
F45M0516	8	5/16"	05	M16 x 1.5	-	22	20	43	71	2,42
F45M0518	8	5/16"	05	M18 x 1.5	-	24	20	43	71	2,51
F45M0614	10	3/8"	06	M14 x 1.5	-	19	20	55	85	3,53
F45M0616	10	3/8"	06	M16 x 1.5	-	22	20	55	85	2,37
F45M0618	10	3/8"	06	M18 x 1.5	-	24	20	55	85	2,42
F45M0620	10	3/8"	06	M20 x 1.5	-	27	23	58	88	3,31
F45M0622	10	3/8"	06	M22 x 1.5	-	27	23	58	88	3,31
F45M0818	12	1/2"	08	M18 x 1.5	-	24	23	65	98	4,30
F45M0820	12	1/2"	08	M20 x 1.5	-	27	23	65	98	3,62
F45M0822	12	1/2"	08	M22 x 1.5	-	27	23	65	98	3,22
F45M0824	12	1/2"	08	M24 x 1.5	-	30	21	66	99	5,16
F45M0826	12	1/2"	08	M26 x 1.5	-	32	21	66	99	5,87
F45M1026	16	5/8"	10	M26 x 1.5	-	32	26	64	100	5,87
F45M1226	20	3/4"	12	M26 x 1.5	-	32	29	63	104	5,81
F45M1230	20	3/4"	12	M30 x 1.5	-	34	31	65	105	10,18

DKM 45° Bogen 60° Konus

Metric female 45° swept elbow

**DKM угловой ниппель 45°,
конус 60°, метрический**



Artikel Code	Schlauch / Hose			Gewinde / Thread F		Abmessung / Dimension mm				Euro
	DN	Inch Inches	Size			CH	B	A	L	
F45M1638	25	1"	16	M38 x 1.5	-	46	41	90	145	19,38
F45M2045	32	1.1/4"	20	M45 x 1.5	-	-	-	-	-	50,79
F45M2452	40	1.1/2"	24	M52 x 1.5	-	-	-	-	-	74,87