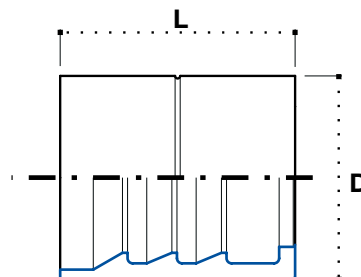


Schälen / Skive / Зачистка

Presshülse R1A / 1 ST - 1 SN

Ferrule R1A / 1 ST - 1 SN

Муфта R1A / 1ST - 1SN



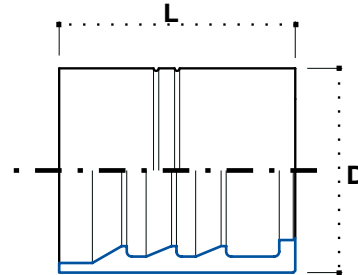
Artikel Code	Schlauch / Hose			Schällänge Aussen / Skive length outside mm.	Pressmaß Crimping Diameters	Abmessung / Dimension mm				Euro
	DN	Inch Inches	Size			-	-	D	L	
B1R03	5	3/16"	03	18	15.2	-	-	17	26.4	0,60
B1R04	6	1/4"	04	20	17.2	-	-	20	29.5	0,43
B1R05	8	5/16"	05	20.5	18.8	-	-	22	29.6	0,51
B1R06	10	3/8"	06	21	21.0	-	-	24	32	0,57
B1R08	12	1/2"	08	24	25.4	-	-	29	34.3	0,86
B1R10	16	5/8"	10	26	28.2	-	-	32	37.2	1,08
B1R12	20	3/4"	12	31.5	32.2	-	-	36	43.2	1,65
B1R16	25	1"	16	34.5	39.8	-	-	43	50.6	2,45
B1R20	32	1.1/4"	20	41	46.6	-	-	52	56.7	5,10
B1R24	40	1.1/2"	24	43.5	53.0	-	-	57	63	7,67
B1R32	50	2"	32	58	66.2	-	-	70	78	13,54

Schälen / Skive / Зачистка

Presshülse R2A / 2 ST - 2 SN

Ferrule R2A / 2 ST - 2 SN

Муфта R2A / 2 ST - 2 SN



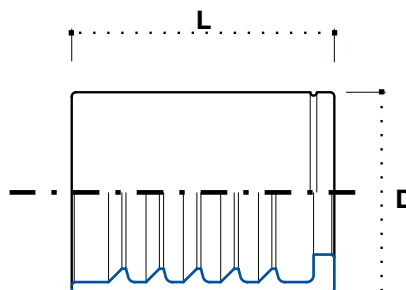
Artikel Code	Schlauch / Hose			Schällänge Aussen / Skive length outside mm.	Pressmaß Crimping Diameters	Abmessung / Dimension mm				Euro
	DN	Inch Inches	Size			-	-	D	L	
B2R03	5	3/16"	03	18.5	17.6	-	-	20	27.1	0,71
B2R04	6	1/4"	04	20	17.8	-	-	21	30.4	0,54
B2R05	8	5/16"	05	21	20.3	-	-	24	30.3	0,57
B2R06	10	3/8"	06	23	23.0	-	-	26	32.4	0,68
B2R08	12	1/2"	08	24	25.7	-	-	30	34	0,91
B2R10	16	5/8"	10	26	29.9	-	-	34	37.5	1,34
B2R12	20	3/4"	12	32	33.5	-	-	38	43.2	1,80
B2R16	25	1"	16	35.5	41.2	-	-	46	50	3,16
B2R20	32	1.1/4"	20	43	50.8	-	-	56	59	6,10
B2R24	40	1.1/2"	24	44.5	57.2	-	-	62	63	9,01
B2R32	50	2"	32	60	69.5	-	-	75	78.9	13,82

Ohne schälen / No skive / Без зачистки

Presshülse R1T / 1 SN

Ferrule R1T / 1 SN

Муфта R1T / 1 SN



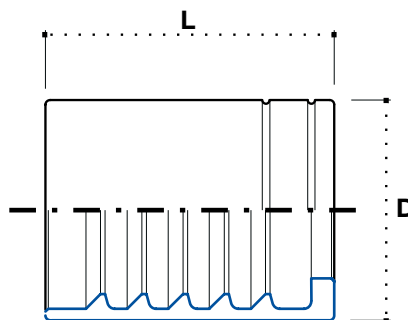
Artikel Code	Schlauch / Hose			Schällänge Aussen / Skive length outside mm.	Pressmaß Crimping Diameters	Abmessung / Dimension mm				Euro
	DN	Inch Inches	Size			-	-	D	L	
B1T03	5	3/16"	03	-	15.4	-	-	19	26	0,60
B1T04	6	1/4"	04	-	16.4	-	-	20	30.5	0,45
B1T05	8	5/16"	05	-	18.2	-	-	22	30.5	0,49
B1T06	10	3/8"	06	-	20.1	-	-	24	31.5	0,60
B1T08	12	1/2"	08	-	24.2	-	-	29	34	0,81
B1T10	16	5/8"	10	-	26.4	-	-	32	37	1,25
B1T12	20	3/4"	12	-	30.8	-	-	42.5	36	1,47
B1T16	25	1"	16	-	38.9	-	-	43	50.5	2,91
B1T20	32	1.1/4"	20	-	48.3	-	-	53	59	4,11
B1T24	40	1.1/2"	24	-	54.2	-	-	60	63	9,41

Ohne schälen / No skive / Без зачистки

Presshülse R2T / 2 SN

Ferrule R2T / 2 SN

Муфта R2T / 2 SN



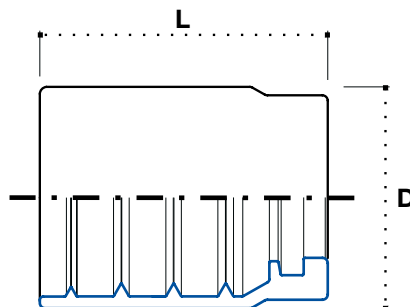
Artikel Code	Schlauch / Hose			Schällänge Aussen / Skive length outside mm.	Pressmaß Crimping Diameters	Abmessung / Dimension mm				Euro
	DN	Inch Inches	Size			-	-	D	L	
B2T03	5	3/16"	03	-	-	-	-	20	26	*
B2T04	6	1/4"	04	-	18.05	-	-	22	30.5	0,47
B2T05	8	5/16"	05	-	20.2	-	-	24	30.5	0,56
B2T06	10	3/8"	06	-	21.4	-	-	25.5	31.5	0,62
B2T08	12	1/2"	08	-	25.6	-	-	30	34	0,86
B2T10	16	5/8"	10	-	28.5	-	-	34	37	1,37
B2T12	20	3/4"	12	-	32.0	-	-	38	42.5	1,64
B2T16	25	1"	16	-	41.0	-	-	46	50	3,16
B2T20	32	1.1/4"	20	-	50.0	-	-	56	59	6,41
B2T24	40	1.1/2"	24	-	57.5	-	-	64	63	9,86

Ohne schälen / No skive / Без зачистки

**Presshülse R12TN /
1SN-2SN-2SC**

Ferrule R12TN / 1SN-2SN-2SC

Муфта R12TN / 1SN-2SN-2SC



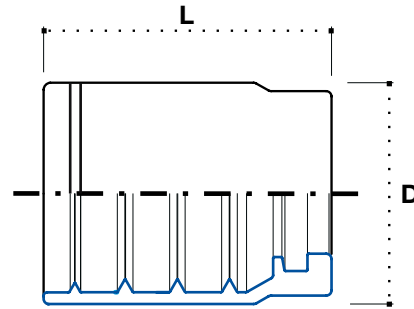
Artikel Code	Schlauch / Hose			Pressmaß / Crimping Diameters			Abmessung / Dimension mm				Euro
	DN	Inch Inches	Size	1 SN	2 SC	2 SN	-	-	D	L	
B12T03N	5	3/16"	03	16,0	16,3	16,7	-	-	21	23	0,77
B12T04N	6	1/4"	04	18.0	18.2	19.0	-	-	23	30	0,46
B12T05N	8	5/16"	05	18.6	19.0	19.6	-	-	24	30	0,50
B12T06N	10	3/8"	06	20.5	20.9	21.3	-	-	26	32	0,60
B12T08N	12	1/2"	08	23.4	23.5	24.4	-	-	29	34	0,68
B12T10N	16	5/8"	10	27.0	27.4	28.2	-	-	33	37	1,08
B12T12N	20	3/4"	12	30.8	31.1	32.0	-	-	37	42	1,34
B12T16N	25	1"	16	39.1	39.1	40.3	-	-	46	51	3,73
B12T20N	32	1.1/4"	20	48.5	-	51.0	-	-	59	59	6,13
B12T24N	40	1.1/2"	24	57.0	-	59.8	-	-	67	67	10,97
B12T32N	50	2"	32	69.4	-	72.4	-	-	80	72	17,50

Ohne schälen / No skive / Без зачистки

Presshülse 1SC - 1SN - 2SC

Ferrule 1SC - 1SN - 2SC

Муфта 1SC - 1SN - 2SC



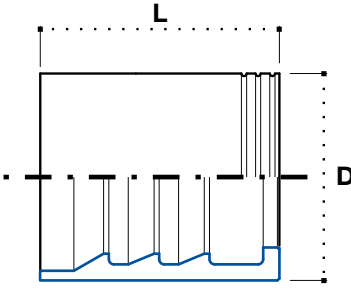
Artikel Code	Schlauch / Hose			Pressmaß / Crimping Diameters			Abmessung / Dimension mm				Euro
	DN	Inch Inches	Size	1 SC	1 SN	2 SC	-	-	D	L	
B1SC04	6	1/4"	04	15.3	16.0	16.2	-	-	20	30	0,50
B1SC05	8	5/16"	05	16.8	17.8	18.0	-	-	22	30	0,53
B1SC06	10	3/8"	06	18.5	20.0	20.0	-	-	24	32	0,60
B1SC08	12	1/2"	08	22.5	23.6	23.8	-	-	28	34	0,78
B1SC10	16	5/8"	10	-	-	-	-	-	32	37	1,15
B1SC12	20	3/4"	12	-	-	-	-	-	35	42	1,40
B1SC16	25	1"	16	36.9	-	-	-	-	43	51	3,40

Schälen / Skive / Зачистка

Presshülse R9R / 4 SP

Ferrule R9R / 4 SP

Муфта R9R / 4SP



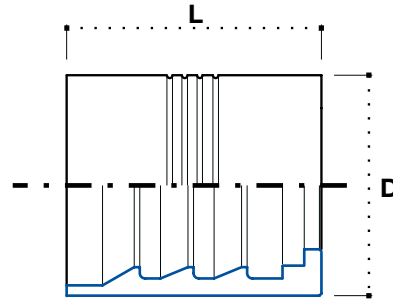
Artikel Code	Schlauch / Hose			Schällänge Aussen / Skive length outside mm.	Pressmaß Crimping Diameters	Abmessung / Dimension mm				Euro
	DN	Inch Inches	Size			-	-	D	L	
B9R04	6	1/4"	04	22	18.7	-	-	21	30.5	0,53
B9R06	10	3/8"	06	25.5	23.2	-	-	26	32	0,63
B9R08	12	1/2"	08	29	26.3	-	-	30	34	0,83
B9R10	16	5/8"	10	31	30.2	-	-	34	40	1,65
B9R12	20	3/4"	12	35	34.6	-	-	38	51.5	2,05
B9R16	25	1"	16	48	42.2	-	-	46	60	2,99
B9R20	32	1.1/4"	20	54	51.2	-	-	56	66	6,50
B9R24	40	1.1/2"	24	62	59.6	-	-	65	76.5	10,33
B9R32	50	2"	32	64	74.6	-	-	80	80	17,22

Schälen / Skive / Зачистка

Presshülse 4SH

Ferrule 4SH

Муфта 4SH



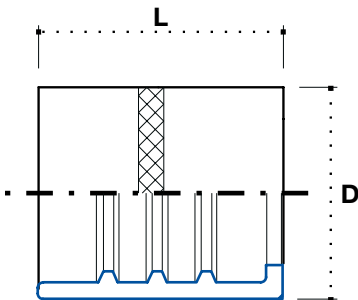
Artikel Code	Schlauch / Hose			Schällänge Aussen / Skive length outside mm.	Pressmaß Crimping Diameters	Abmessung / Dimension mm				Euro
	DN	Inch Inches	Size			-	-	D	L	
B9R10	16	5/8"	10	31	30.2	-	-	34	40	1,65
B9R12	20	3/4"	12	35	34.6	-	-	38	51.5	2,05
B9R16	25	1"	16	48	42.2	-	-	46	60	2,99
B4SH20	32	1.1/4"	20	54	48.2	-	-	56	66	7,04
B4SH24	40	1.1/2"	24	62	57.9	-	-	65	76.5	10,50
B4SH32	50	2"	32	64	70.5	-	-	80	80	17,71

Ohne schälen / No skive / Без зачистки

Presshülse R7 / R8 / Thermoflex

Ferrule R7 / R8 / Thermoflex

Муфта R7 / R8 / Thermoflex



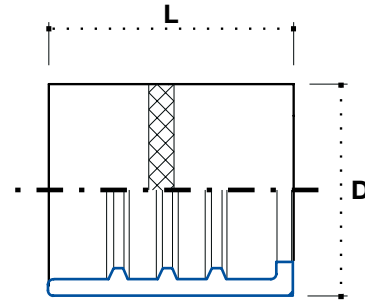
Artikel Code	Schlauch / Hose			Pressmaß Crimping Diameters MT-MTH1	Pressmaß Crimping Diameters R7-R8	Abmessung / Dimension mm				Euro
	DN	Inch Inches	Size			-	-	D	L	
B7R03	5	3/16"	03	11.3	11.2	-	-	14	30	0,52
B7R04	6	1/4"	04	14.2	14.1	-	-	17	30.2	0,43
B7R05	8	5/16"	05	16.0	16.2	-	-	19	29.8	0,55
B7R06	10	3/8"	06	18.2	18.2	-	-	21	30.4	0,61
B7R08	12	1/2"	08	22.3	22.2	-	-	25.5	34.2	0,84
B7R10	16	5/8"	10	25.7	25.8	-	-	28.5	36.3	1,58
B7R12	20	3/4"	12	27.8	29.0	-	-	32.1	42.4	2,14
B7R16	25	1"	16	36.7	36.8	-	-	40	50.2	3,79

Ohne schälen / No skive / Без зачистки

Presshülse PTFE (glatt)

Ferrule PTFE (even)

Муфта PTFE (гладкий)



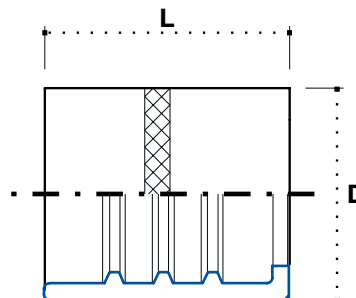
Artikel Code	Schlauch / Hose			Schällänge Aussen / Skive length outside mm.	Pressmaß Crimping Diameters	Abmessung / Dimension mm				Euro
	DN	Inch Inches	Size			-	-	D	L	
PTFE-GL05	5	3/16"	03	-	-	-	-	-	-	0,93
PTFE-GL06	6	1/4"	04	-	13.0	-	-	-	-	0,95
PTFE-GL08	8	5/16"	05	-	14.8	-	-	-	-	1,16
PTFE-GL10	10	3/8"	06	-	16.0	-	-	-	-	1,18
PTFE-GL12	12	1/2"	08	-	21.0	-	-	-	-	1,20
PTFE-GL16	16	5/8"	10	-	22.3	-	-	-	-	1,65
PTFE-GL20	20	3/4"	12	-	28.0	-	-	-	-	1,85
PTFE-GL25	25	1"	16	-	35.0	-	-	-	-	2,85

Ohne schälen / No skive / Без зачистки

Presshülse PTFE (gewellt)

Ferrule PTFE (convoluted)

Муфта PTFE (гофрированный)



Artikel Code	Schlauch / Hose			Schällänge Aussen / Skive length outside mm.	Pressmaß Crimping Diameters	Abmessung / Dimension mm				Euro
	DN	Inch Inches	Size			-	-	D	L	
PTFE-GW06	6	1/4"	04	-	13.5	-	-	-	-	0,93
PTFE-GW10	10	3/8"	06	-	16.0	-	-	-	-	1,67
PTFE-GW12	12	1/2"	08	-	19.7	-	-	-	-	1,80
PTFE-GW16	16	5/8"	10	-	22.7	-	-	-	-	3,05
PTFE-GW20	20	3/4"	12	-	26.5	-	-	-	-	3,20
PTFE-GW25	25	1"	16	-	33.7	-	-	-	-	6,20
PTFE-GW32	32	1.1/4"	20	-	44.9	-	-	-	-	7,00
PTFE-GW40	40	1.1/2"	24	-	50.2	-	-	-	-	8,90
PTFE-GW50	50	2"	32	-	-	-	-	-	-	13,00