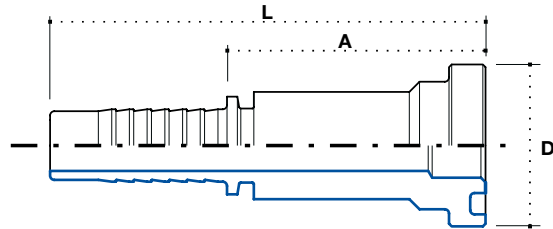


**Flanschanschluss SAE 6000 PSI
- einteilig**

**Straight flange one piece SAE
6000 PSI**

**Фланцевое соединение SAE
6000 PSI**

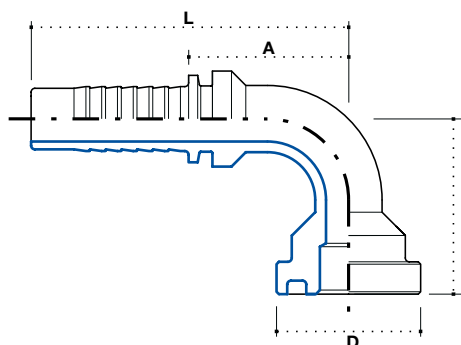


Artikel Code	Flansch / Flange			Gewinde / Thread F		Abmessung / Dimension mm				Euro
	DN	Inch Inches	Size			-	D	A	L	
FDP0808I	12	1/2"	08	1/2"	-	-	31.7	50	83	7,21
FDP0812I	12	1/2"	08	3/4"	-	-	41.3	55	87	9,41
FDP1008I	16	5/8"	10	1/2"	-	-	31.7	50	86	15,96
FDP1012I	16	5/8"	10	3/4"	-	-	41.3	51	87	13,14
FDP1208I	20	3/4"	12	1/2"	-	-	31.7	53	94	14,08
FDP1212I	20	3/4"	12	3/4"	-	-	41.3	53	94	7,04
FDP1216I	20	3/4"	12	1"	-	-	47.6	64	105	10,09
FDP1612I	25	1"	16	3/4"	-	-	41.3	64	105	20,98
FDP1616I	25	1"	16	1"	-	-	47.6	66	121	10,32
FDP1620I	25	1"	16	1.1/4"	-	-	54	71	126	14,08
FDP2016I	32	1.1/4"	20	1"	-	-	47.6	66	126	27,39
FDP2020I	32	1.1/4"	20	1.1/4"	-	-	54	67	127	13,68
FDP2024I	32	1.1/4"	20	1.1/2"	-	-	63.5	78	139	21,60
FDP2424I	40	1.1/2"	24	1.1/2"	-	-	63.5	78	149	24,11
FDP2432I	40	1.1/2"	24	2"	-	-	79.4	73	143	51,16
FDP3232I	50	2"	32	2"	-	-	79.4	73	153	37,56

**90° Flanschanschluss SAE
6000 PSI - einteilig**

**90° Flange one piece SAE
6000 PSI**

**Угловое 90° фланцевое
соединение SAE 6000 PSI**

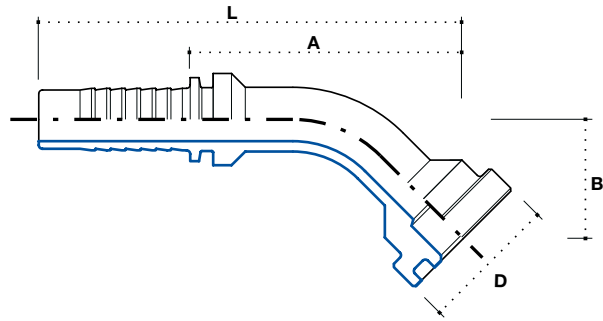


Artikel Code	Schlauch / Hose			Flansch / Flange		Abmessung / Dimension mm				Euro
	DN	Inch Inches	Size	F		D	B	A	L	
F90P0808I	12	1/2"	08	1/2"	-	31.7	44	39	72	9,55
F90P0812I	12	1/2"	08	3/4"	-	41.3	51	39	72	13,45
F90P1008I	16	5/8"	10	1/2"	-	31.7	50	49	85	21,92
F90P1012I	16	5/8"	10	3/4"	-	41.3	59	49	85	22,69
F90P1208I	20	3/4"	12	1/2"	-	31.7	53	57	98	25,05
F90P1212I	20	3/4"	12	3/4"	-	41.3	62	57	98	9,41
F90P1216I	20	3/4"	12	1"	-	47.6	67	57	98	15,33
F90P1612I	25	1"	16	3/4"	-	41.3	64	77	132	29,73
F90P1616I	25	1"	16	1"	-	47.6	69	77	132	14,25
F90P1620I	25	1"	16	1.1/4"	-	54	76	77	132	21,92
F90P2016I	32	1.1/4"	20	1"	-	47.6	87	89	150	34,43
F90P2020I	32	1.1/4"	20	1.1/4"	-	54	93	89	150	22,86
F90P2024I	32	1.1/4"	20	1.1/2"	-	63.5	97	89	150	36,77
F90P2424I	40	1.1/2"	24	1.1/2"	-	63.5	111	101	172	41,15
F90P2432I	40	1.1/2"	24	2"	-	79.4	126	101	172	112,66
F90P3232I	50	2"	32	2"	-	79.4	128	144	224	71,99

**45° Flanschanschluss SAE
3000 PSI - einteilig**

45° Flange one piece 3000 PSI

**Угловое 45° фланцевое
соединение SAE 6000 PSI**



Artikel Code	Flansch / Flange			Gewinde / Thread F		Abmessung / Dimension mm				Euro
	DN	Inch Inches	Size			D	B	A	L	
F45P0808I	12	1/2"	08	1/2"	-	31.7	23	64	97	9,55
F45P0812I	12	1/2"	08	3/4"	-	41.3	28	69	102	13,45
F45P1008I	16	5/8"	10	1/2"	-	31.7	26	60	96	21,92
F45P1012I	16	5/8"	10	3/4"	-	41.3	30	66	102	22,69
F45P1208I	20	3/4"	12	1/2"	-	31.7	28	64	105	22,05
F45P1212I	20	3/4"	12	3/4"	-	41.3	32	70	111	9,41
F45P1216I	20	3/4"	12	1"	-	47.6	35	74	115	15,33
F45P1612I	25	1"	16	3/4"	-	41.3	35	86	141	29,73
F45P1616I	25	1"	16	1"	-	47.6	32	89	144	14,25
F45P1620I	25	1"	16	1.1/4"	-	54	36	94	149	21,92
F45P2016I	32	1.1/4"	20	1"	-	47.6	36	100	161	34,43
F45P2020I	32	1.1/4"	20	1.1/4"	-	54	43	104	165	22,86
F45P2024I	32	1.1/4"	20	1.1/2"	-	63.5	44	107	168	36,77
F45P2424I	40	1.1/2"	24	1.1/2"	-	63.5	41	118	189	41,15
F45P2432I	40	1.1/2"	24	2"	-	79.4	52	119	190	112,66
F45P3232I	50	2"	32	2"	-	79.4	59	153	233	71,99