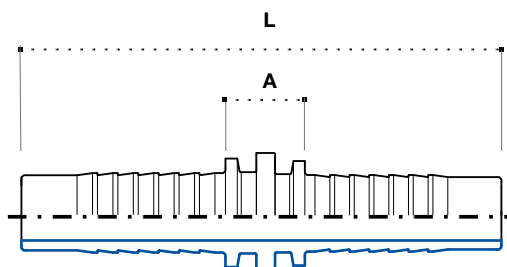


Verbindungsniessel

Double connector

Двойной соединительный
нипель

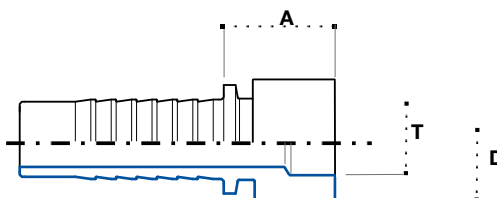


Artikel Code	Schlauch / Hose			Gewinde / Thread	Abmessung / Dimension mm					Euro
	DN	Inch Inches	Size		-	-	A	L		
GD04	6	1/4"	04	-	-	-	14	70	5,07	
GD05	8	5/16"	05	-	-	-	14	70	4,76	
GD06	10	3/8"	06	-	-	-	15	75	1,85	
GD08	12	1/2"	08	-	-	-	20	86	2,65	
GD10	16	5/8"	10	-	-	-	16	88	3,93	
GD12	20	3/4"	12	-	-	-	18	100	5,56	
GD16	25	1"	16	-	-	-	20	130	10,35	
GD20	32	1.1/4"	20	-	-	-	21	143	14,42	

Schweisnippel

Lifesaver insert

Сварочный ниппель

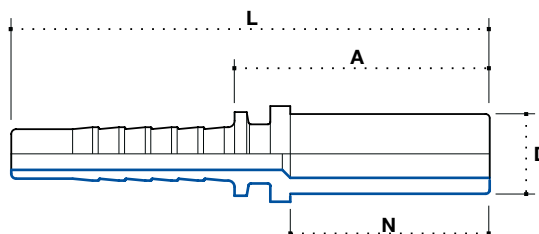


Artikel Code	Schlauch / Hose			Gewinde / Thread	Abmessung / Dimension mm					Euro
	DN	Inch Inches	Size		-	-	T	A	D	
CS03	5	3/16"	03	-	-	-	-	-	-	0,83
CS04	6	1/4"	04	-	-	-	-	-	-	0,51
CS04T8	6	1/4"	04	-	-	8	-	-	-	0,60
CS05	8	5/16"	05	-	-	-	-	-	-	0,71
CS06	10	3/8"	06	-	-	-	-	-	-	0,60
CS06T10	10	3/8"	06	-	-	10	14	16	-	0,68
CS06T12	10	3/8"	06	-	-	12	14	16	-	0,68
CS08	12	1/2"	08	-	-	-	16	20	-	0,91
CS08T14	12	1/2"	08	-	-	14	16	20	-	1,06
CS08T15	12	1/2"	08	-	-	15	16	20	-	1,06
CS08T16	12	1/2"	08	-	-	16	16	20	-	1,06
CS10	16	5/8"	10	-	-	-	18	24	-	1,17
CS12	20	3/4"	12	-	-	-	15	26	-	1,43
CS16	25	1"	16	-	-	-	22	32	-	2,45
CS20	32	1.1/4"	20	-	-	-	-	-	-	4,56
CS24	40	1.1/2"	24	-	-	-	-	-	-	8,78
CS32	50	2"	32	-	-	-	-	-	-	15,19

Französischer Rohrstutzen

Straight standpipe french type

Штуцер французкий тип



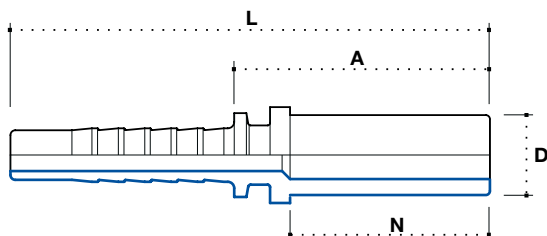
3

Artikel Code	Schlauch / Hose			Gewinde / Thread		Abmessung / Dimension mm				Euro
	DN	Inch Inches	Size			D	N	A	L	
PDL0413F	6	1/4"	04	-	-	13	22	29.5	58	26,16
PDL0513F	8	5/16"	05	-	-	13	22	29.5	58	26,16
PDL0613F	10	3/8"	06	-	-	13	22	29.5	60	19,24
PDL0617F	10	3/8"	06	-	-	17	24	31.5	62	23,80
PDL0817F	12	1/2"	08	-	-	17	24	32.5	65.5	21,52
PDL0821F	12	1/2"	08	-	-	21	26	34.5	67.5	*
PDL1021F	16	5/8"	10	-	-	21	26	34.5	70.5	24,20
PDL1221F	20	3/4"	12	-	-	21	26	35.3	76.3	27,50
PDL1227F	20	3/4"	12	-	-	26	25	34.3	75.3	28,44
PDL1633F	25	1"	16	-	-	33	27	37.3	92.3	30,81
PDL2033F	32	1.1/4"	20	-	-	33	27	38	99	31,52

Rohrstutzen BEL - BES

Straight standpipe BEL - BES

Штуцер BEL - BES

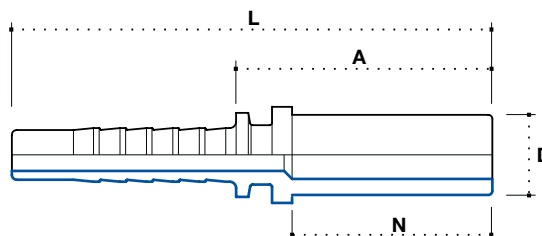


Artikel Code	Schlauch / Hose			Gewinde / Thread		Abmessung / Dimension mm				Euro
	DN	Inch Inches	Size			D	N	A	L	
PDL0306	5	3/16"	03	-	-	6	24	30	55	1,06
PDL0308	5	3/16"	03	-	-	8	24	30	55	1,23
PDL0406	6	1/4"	04	-	-	6	22.5	30.5	58.5	0,66
PDL0408	6	1/4"	04	-	-	8	23	30.5	58.5	0,63
PDL0410	6	1/4"	04	-	-	10	25	32	59.5	0,66
PDL0412	6	1/4"	04	-	-	12	25	32	60	1,06
PDL0508	8	5/16"	05	-	-	8	23	30	58	0,71
PDL0510	8	5/16"	05	-	-	10	25	32	60	0,71
PDL0512	8	5/16"	05	-	-	12	25	32	60	0,77
PDL0610	10	3/8"	06	-	-	10	25.5	33	63	0,80
PDL0612	10	3/8"	06	-	-	12	25	32.5	62	0,71
PDL0614	10	3/8"	06	-	-	14	28	35.5	65.5	0,91
PDL0615	10	3/8"	06	-	-	15	25.5	33	63	0,91
PDL0812	12	1/2"	08	-	-	12	25	33	66	4,67
PDL0814	12	1/2"	08	-	-	14	28	36	69	1,31
PDL0815	12	1/2"	08	-	-	15	25.5	33.5	66.5	1,03
PDL0816	12	1/2"	08	-	-	16	31	39	72	1,14
PDL0818	12	1/2"	08	-	-	18	27	35.5	68.5	1,48
PDL1018	16	5/8"	10	-	-	18	28	36	71.5	1,43
PDL1020	16	5/8"	10	-	-	20	35	43.5	79.5	1,48
PDL1022	16	5/8"	10	-	-	22	29	38	74	2,05
PDL1218	20	3/4"	12	-	-	18	26	34.5	75	2,96
PDL1220	20	3/4"	12	-	-	20	35	44	84.5	1,97
PDL1222	20	3/4"	12	-	-	22	29.5	38	80	1,80

Rohrstutzen BEL - BES

Straight standpipe BEL - BES

Штуцер BEL - BES



3

Artikel Code	Schlauch / Hose			Gewinde / Thread		Abmessung / Dimension mm				Euro
	DN	Inch Inches	Size			D	N	A	L	
PDL1225	20	3/4"	12	-	-	25	41	51	91.5	2,31
PDL1625	25	1"	16	-	-	25	39.5	50	105	3,53
PDL1628	25	1"	16	-	-	28	30.5	41	96	3,28
PDL1630	25	1"	16	-	-	30	43.5	54	109	3,79
PDL2030	32	1.1/4"	20	-	-	30	43	54.5	115	8,29
PDL2035	32	1.1/4"	20	-	-	35	35.5	46.5	106.5	5,67
PDL2038	32	1.1/4"	20	-	-	38	48	60	120	7,24
PDL2438	40	1.1/2"	24	-	-	38	48	60	131	10,52
PDL2442	40	1.1/2"	24	-	-	42	36	47	118	10,52